

The Changing Safety Net for Low Income Parents and Their Children: Structural or Cyclical Changes in Income Support Policy?

Bradley Hardy*
Department of Public Administration and Policy
American University

Timothy Smeeding
La Follette School of Public Affairs and Department of Economics
University of Wisconsin–Madison

James P. Ziliak
Center for Poverty Research
Department of Economics
University of Kentucky

First Version August 2013
Revised March 2017

* Address correspondence to Bradley Hardy, Department of Public Administration and Policy, American University, Ward Circle Building, Washington, DC 20016-8070; Email: hardy@american.edu; Phone: 202–885–3881. We thank the editor, four anonymous reviewers, Susan Mayer, Dan Puskin, Darrick Hamilton, Robin Lumsdaine, and participants at the 2013 APPAM conference, 2014 ASSA meetings, the 2014 Institute for Research on Poverty Building Human Capital Conference, and Washington and Lee University for helpful feedback on earlier versions. We also thank Robert Hartley for valuable research assistance. Finally, we thank the Smith Richardson Foundation for providing financial support. All errors are our own.

Abstract

The Supplemental Nutrition Assistance Program (SNAP), the Earned Income Tax Credit (EITC), and the Additional Child Tax Credit (CTC) are the largest means-tested transfer programs available to able-bodied working poor and near-poor families, and we document that multi-year joint reliance on the programs has more than doubled over the past decade. We estimate the determinants associated with this growth, focusing especially on the roles of state labor-market conditions, federal and state tax and transfer-program policy choices, and household demographics. The estimates suggest that joint program participation is countercyclical with respect to state business cycles. However, the secular decline in full-time work, falling wages and concomitant rise in out-of-the labor force status have had offsetting effects on joint participation in SNAP and the EITC/CTC. Counterfactual simulations indicate that the relationship between the macroeconomy and multi-year joint program participation has strengthened in recent years so that the weak economy in the era of the Great Recession accounts for the majority of the growth in participation. However, over the long term, the growth in more permanent attachment to these programs stems mainly from changing policy.

I. Introduction

Expenditures on means-tested transfer programs in the United States have risen dramatically in recent decades (Moffitt 2015b; Ziliak 2015a). However, this growth in program outlays is not universal. For example, inflation-adjusted spending on the Supplemental Nutrition Assistance Program (SNAP), the Earned Income Tax Credit (EITC), and the Additional Child Tax Credit (CTC) grew by 290, 59, and over 2200 percent from 2000-2012, respectively.¹ In contrast, real spending on cash assistance from the Temporary Assistance for Needy Families (TANF) program declined, reflecting the transformation of the safety net away from cash-based assistance to one more reliant on refundable tax credits and in-kind food assistance (Bitler and Hoynes 2010; Hardy 2016; Moffitt 2013, 2015b; Ziliak 2015a). This spending pattern predated the Great Recession, suggesting that factors beyond the business cycle are potentially driving transfer program participation. These may include policy reforms affecting program eligibility and generosity, such as the 1990s welfare reform and expansion of EITC and creation of the CTC, the decline in full-time work, stagnant earnings, the rise in disability, and changing demographic trends leaving families vulnerable to economic risk (Meyer and Rosenbaum 2001; Piketty and Saez 2003; Gundersen and Ziliak 2004; Autor and Duggan 2006; Autor et al. 2008; Cancian and Reed 2009). Working alone or together, these demographic, macroeconomic, and policy forces might push the safety net towards a longer-term role as an income supplement for the working poor.

In this paper, we estimate the determinants associated with the growth in longer-term reliance on the safety net over the past 30 years. Specifically, we construct a series of two-year (biennial) panels from the 1981–2013 waves of the Current Population Survey's (CPS) Annual

¹ See Appendix Figure 1. All appendix figures and tables are available as a separate file for review on the Demography Editorial Express review system, and will be made available online.

Social and Economic Supplement (ASEC) to estimate the effect of state labor-market conditions, federal and state transfer-program policy choices, and household demographics governing joint participation of SNAP, the EITC, and the CTC. With the model estimates we then conduct a number of counterfactual simulations to assess the relative contributions of the economy, policy, and demographics on the dramatic rise in multiple transfer-program participation. We emphasize SNAP, the EITC, and CTC both because of the extraordinary growth in outlays, but also because of their ties to a more work-based safety net. SNAP, also known as food stamps, provides monthly benefits to support household purchases of food for preparation and consumption in the home. Eligibility for the program is income conditioned, and while it is open to workers and nonworkers alike, there has been strong secular growth in the fraction of the SNAP caseload combining benefits with work (Hoynes and Schanzenbach 2016). The EITC and Additional CTC are refundable tax credits that are received once per year after filing the tax return. Like SNAP, the EITC and CTC are income conditioned, but are available only to workers. Also distinguishing these three programs is the fact that they are highly liquid; SNAP is formally an in-kind program but benefits are treated as near cash by participants (Hoynes and Schanzenbach 2009). This stands in contrast to Medicare and Medicaid, two highly illiquid programs, or Social Security retirement and disability insofar as they are not conditional on sickness, age, or disability status. Moreover, unlike housing assistance, neither SNAP, EITC, or the CTC has waiting lists, so that all who are eligible should receive benefits if they apply.

Our empirical framework extends the prior literature in three substantive directions. First, previous research on SNAP and the EITC has relied upon annual repeated cross-sectional data that provide just a snapshot of program use (Meyer and Rosenbaum 2001; Bitler, Hoynes, and Kuka 2014; Ziliak 2015b). While cross-sectional research designs capture important, shorter-

term conditions facing individuals and families, such as temporary job loss, our use of a panel permits us to study the factors driving less transitory, longer-term usage of transfer programs. While we are necessarily limited to two-year panels based on the design of the CPS, we demonstrate that there is churn in program use and secular biennial growth in program participation missing from the cross-sectional case.

Second, to our knowledge, we are the first to examine the factors affecting biennial multiple-program participation in SNAP, the EITC, and the CTC. Ziliak (2015b) focused solely on the factors driving the rise in SNAP participation in the cross-section, and Bitler, Hoynes, and Kuka (2014) focused on cross-sectional analysis of the EITC. Research on multiple program participation in the cross-section is scarce (Moffitt 2015a), let alone over time. Exceptions to this include recent work by Cancian et al. (2014) examining multiple program participation in Wisconsin through the lens of subsequent program disconnectedness, while Slack et al. (2014) examine how low-income families combine benefits in the post-Welfare Reform era. Slack et al. confirm that many households combine benefits and thus treat assistance as a package and not necessarily independent. Similarly, Moffitt (2015a) shows that among those receiving SNAP in the 2008-2009 Survey of Income and Program Participation, 38 percent also received the EITC, and 28 percent received the CTC. These percentages rise to 53 and 40 percent, respectively, among the non-elderly, non-disabled SNAP population, and to 89 and 72 percent among those with incomes between 50 and 100 percent of the poverty line. By contrast, only 10-15 percent of SNAP families in any one of these samples received TANF, again suggesting a shift to multiple-program participation that coincides with, or fosters, work such as SNAP, EITC, and the CTC.

For completeness, we also report briefly on models inclusive of TANF and Supplemental Security Income (SSI), a non-work conditioned disability program.²

Third, we examine a wider array of family structures at risk of transfer use, and we focus more directly on the role of stagnant wages and the shift away from full time work on participation. Our focus on families with children is motivated by the design of the American social welfare system, which is largely geared towards assisting adults with dependent children (Currie 2006). The key advantage of the ASEC is the comparatively large sample size permitting us to focus on demographic groups most likely at risk of participation in the safety net from 1980 onward, especially families with low incomes and/or skills, as well as families headed by a single mother—the focal demographic group targeted by the 1990s welfare reforms. Moreover, the ASEC is the official data set used to calculate poverty and income inequality—in effect offering a useful baseline off of which to assess and contextualize the predictors of participation in major social welfare programs.

We find evidence of significant growth in longer-term joint use of SNAP, the EITC, and the CTC, increasing 104 percent across all families with children since 2000 so that by 2012, three years after the end of the Great Recession, nearly 1 in 16 American families with children relied on both programs across two years. This joint participation rate jumps to almost 1 in 5 families living below twice the federal poverty line, to over 1 in 8 among single mother families (regardless of their income level), and 1 in 9 among family heads with a high school degree or less. The model estimates suggest that SNAP operates as an unambiguous countercyclical policy with respect to state unemployment rates. Increases in the share of workers out of the labor force as well as the state median wage have led to decreases in joint SNAP, EITC, and CTC use,

² Results with TANF and SSI are shown in Appendix Tables 15-17.

demonstrating the unique margins off of which the EITC operates relative to traditional cash welfare—persons out of work receive no benefit while lower earners are supplemented. We also find that increases in real maximum SNAP benefits are associated with the growth in joint program participation; the generosity of the EITC phase-in rate is positively associated with EITC and CTC program participation. This suggests that changes in the benefit structure of the programs have fostered the coupling of work with work-based assistance, while at the same time strengthening the safety net for vulnerable low skill families with children.

Combining the factors together, the simulations suggest that the majority of the increase in joint use of SNAP *and* EITC/CTC from 2000 to 2012 is associated neither with the cyclical nor structural aspects of the economy, nor changing demographics, and instead is attributed to changing policy in the SNAP and EITC programs. The primacy of policy holds for all subsamples, and stands in stark contrast from the factors accounting for the post-2000 growth in SNAP alone where cyclical and structural labor-market factors account for at least one-half of the growth, and demographics play a more prominent role. Importantly, we note that the former result of the importance of policy over the economy for the joint use of SNAP and EITC/CTC since 2000 is sensitive to whether we use parameters estimated over the entire three-decade period or from the post-2000 period alone. In the latter case, the state macroeconomy becomes the leading factor for joint program participation, suggesting a strengthening in the relationship between economic conditions and participation in SNAP, the EITC, and CTC in recent years.

II. Setting the Context: SNAP, EITC, CTC and the Work-Based Safety Net

Fundamental changes in the U.S. social policy landscape throughout the 1980s and 1990s significantly altered the economic rewards to work and to participation in transfer programs, affecting all segments of the low-income population—especially single-mother headed families.

During his first campaign for president, then Governor Clinton pledged to “end welfare as we know it,” and upon election in 1992 states aggressively pursued waivers from federal rules governing their main cash welfare program, Aid to Families with Dependent Children (AFDC). These changes were codified into federal law with passage of the Personal Responsibility and Work Opportunity Reconciliation Act of 1996 (aka “welfare reform”) that eliminated the AFDC program and replaced it with TANF. TANF policies varied widely across states, but generally included a set of “carrots” and “sticks”. The former included both expanded liquid asset limits for eligibility and earnings disregards that permitted mothers to retain a higher fraction of benefits as their earnings increased, while the latter included, among others, work requirements and time limits for benefit receipt. Importantly, funding was converted from an open-ended entitlement financed by a federal-state matching grant under AFDC to a fixed (in nominal dollars) \$16.5 billion federal block grant under TANF. States reconfigured their programs from one that primarily provided cash assistance to one that predominantly provides in-kind assistance such as child-care vouchers, workforce training, and marriage counseling, among others, and that is much less target efficient on assisting the poor (Bitler and Hoynes 2016).

Concurrent to the new cash welfare law were enhanced incentives for low-income persons to work via expansions in the EITC, the creation of the Additional CTC, and liberalization of eligibility for participation in SNAP. The EITC was established in 1975 as the first refundable credit in the federal tax code in a bid to increase the incentive to work by offsetting the regressive Social Security payroll tax among low-wage workers (Hotz and Scholz 2003). The size of the credit first rises with earnings, is then constant over a certain range, and finally is gradually phased out as earnings continue to increase. Provided that the credit amount exceeds taxes owed the balance gets refunded. Over time the implicit scope of the program

expanded to one that not only spurred work, but also combated poverty. This occurred through a series of increases, first as part of the Tax Reform Act of 1986, and then the Omnibus Budget Reconciliation Acts of 1990 and 1993, the latter of which increased the generosity of the credit, especially for families with two or more qualifying children. Finally, the American Recovery and Reinvestment Act of 2009 created a new, higher credit for three or more qualifying children (Steuerle 2015; Bitler and Hoynes 2016). In tax year 2015 the maximum credit for a single headed household with two qualifying children was \$5,548, or 40 percent of earnings. It is estimated that 5-6 million persons are lifted out of poverty each year by the EITC, and over 9 million when the alternative poverty line from the Census Bureau's Supplemental Poverty Measure is used (Nichols and Rothstein 2016).

At the same time as the TANF program was being rolled out, Congress passed the Taxpayer Relief Act of 1997 that introduced the Child Tax Credit. Initially the credit was worth up to \$400 for each qualifying child under age 17, but through a series of legislative changes, the credit today is worth up to \$1,000 for each qualifying child. It also has a refundable component if the amount of the CTC exceeds the amount of tax owed and (a) the household has three or more dependent children or (b) earned income exceeds \$3,000 (CBO 2013b). As shown in Appendix Figure 1, spending on the Additional CTC is now in excess of \$30 billion annually and larger than TANF. The December 2015 federal budget agreement made all of these ARRA expansions in the EITC and CTC a permanent part of the income tax structure.

The 1996 welfare reform also affected SNAP rules. SNAP, originally known as the Food Stamp Program, was established in 1964 as a means of providing food assistance to low-income and low-asset households. Benefits are federally funded, with the maximum benefit varying by household size but constant across the 48 contiguous states and the District of Columbia. Initially

households were required to meet two income tests—gross income less than 130 percent of the poverty guideline for the household size, and net income below 100 percent of the line—and two asset tests, one pertaining to holdings of liquid wealth (e.g. cash, checking, savings) and one to vehicle wealth. The gross income limit is waived for households containing a disabled person or with persons age 60 or older, and the liquid asset limit is higher for these households. There was no work requirement associated with benefit receipt and they were available to all legal residents who qualified. This changed with welfare reform, wherein restrictions on benefit receipt were imposed upon legal immigrants and so-called ABAWDS—able-bodied adults without dependents working less than 20 hours per week. The reform also reduced the maximum benefit and froze many deductions used in calculating net income; it allowed states to sanction individuals and households for noncompliance with TANF requirements or child support payments; and it mandated that states replace the paper coupons with the Electronic Benefit Transfer (EBT) debit cards. Take-up rates (i.e. participation rates among those eligible) plummeted from nearly 75 percent before reform to just over 50 percent five years after (Lefton, et al. 2011). In response, rule changes implemented first by USDA, and then within the 2002 Farm Bill passed by Congress, restored eligibility for most of the legal residents removed by the 1996 reform, liberalized financial eligibility rules (notably asset tests), and allowed states to utilize broad-based categorical eligibility that gave flexibility to apply more generous TANF asset and gross-income tests to determine SNAP eligibility. Many states also shifted to electronic applications, reducing the potential stigma associated with SNAP use. Furthermore, in the 2008 Farm Bill, states were given the option of increasing or removing both the vehicle and liquid

asset tests. While all have removed the value of at least one vehicle from the test, upwards of 38 states have also eliminated liquid asset tests at some point over the past decade.³

Combined, the restrictions placed on cash welfare, alongside new incentives to work with EITC expansions and the introduction of the CTC, point to expected increases in program take-up, while the retrenchment of SNAP eligibility in the 1990s followed by the liberalization of program rules in the 2000s point to decadal-specific shifts in policy-induced program participation. For example, with respect to SNAP, Ganong and Leibman (2013) find that longer recertification periods—whereby recipients update information on income and eligibility—along with simplified reporting positively impact program take-up. Likewise, for the EITC, workers eligible for lower credits in the phase-in range are less likely to participate, as are those with less education (Jones 2014).

These policy reforms did not occur in isolation from broader macroeconomic and demographic trends. On the macroeconomic front, there have been four recessions since 1980—1981-82, 1991, 2001, and the Great Recession that officially spanned from December 2007 to June 2009—as well as three of the four longest economic expansions since World War II following these downturns. All else equal, participation in SNAP is expected to be counter-cyclical—rising when the economy is falling—as households experience declining earnings and other forms of economic hardship. However, participation in the EITC and CTC is less clear over the business cycle. Falling incomes from earnings and/or hours reductions could bring some workers and families into eligibility as low earners. This may be especially true for formerly EITC-ineligible married families that are buffered against economic shocks by the EITC when

³ A recent study by Heflin, Mueser, and Cronin (2014) highlights that while 35 states in 2014 had reportedly removed liquid asset tests, 28 of them still listed the test in their pre-screening web-based online tools for potential SNAP eligibility, which could have the effect of deterring some from applying.

one worker faces economic hardship or job loss. On the other hand, if job loss occurs and results in a total loss of earnings, economic shocks associated with unemployment could result in lowered EITC and CTC participation. During economic expansions, low-skilled persons out of the labor force could be enticed to enter, potentially increasing EITC and CTC participation, while those working could receive wage and/or hours boosts that lift them out of eligibility. These potentially heterogeneous participation effects suggest that we should estimate our empirical model for different skill and income groups.

On top of the business-cycle shocks are important secular economic trends that could affect program participation. Inflation-adjusted wages have been stagnant or declining in the lower half of the wage distribution for the better part of four decades (Autor, Katz, and Kearney 2008), which could lead to greater long-term attachment to programs such as SNAP, the EITC, and the CTC. Likewise, detachment from the labor force for extended periods (continuous two-years) rose over four-fold from about 8 percent to 38 percent among less skilled men of prime working age (Ziliak, Hardy, and Bollinger 2011), which would at once lead to increases in SNAP and decreases in the EITC and CTC. This has been buttressed by strong secular growth in disability, again pulling toward higher SNAP and lower EITC and CTC, with spending on Social Security Disability and Supplemental Security Income (SSI) programs more than doubling in real terms since 2000 alone to nearly \$200 billion annually (Autor and Duggan 2007).

The changing demographic makeup of the American household could also have potentially countervailing influences on trends in SNAP, the EITC, and CTC participation. Population aging and delays in childbirth each likely put downward pressure on program participation because take-up rates in means-tested programs are lower among older adults and those without children. Likewise, secular growth in high school completion and college

attendance since 1980 also put downward pressure on SNAP program use, primarily because incomes and education are positively correlated, but may have resulted in greater take-up of EITC and CTC. On the other hand, the rise of out-of-wedlock childbirth and delay of marriage point toward increased reliance on public assistance because of greater economic need (Tach and Eads 2015). One would also expect an interaction between family structure and social policy reforms such as welfare reform and the EITC. Namely, as the 1996 welfare reform was aimed at reducing welfare use and increasing work among single-mother families, this demographic group should especially influence the growth in the EITC, CTC and SNAP. As such, we estimate the empirical model below separately for single mothers, the low-income, and the low-skilled.

III. Empirical Model and Data

Based on the discussion above, our objective is to model multi-year participation in SNAP, EITC, and CTC as a function of household demographic characteristics, the state macroeconomy, and state-level policy choices as

$$y_{ijk}^{t,t+1} = \alpha_k + X_{it}\gamma_k + Z_{jt}\delta_k + \pi_{jk} + \varphi_{tk} + u_{ijtk}, \quad (1)$$

where $y_{ijk}^{t,t+1}$ is an indicator equal to 1 if anyone in household i residing in state j receives program k ($k =$ joint SNAP, EITC, and CTC) in both time t and $t+1$; X_{it} is a vector of demographic characteristics of the household head in the initial period t ; Z_{jt} is a vector of state (or federal) by year economic and policy variables from period t ; π_{jk} is a set of indicators for each state to control for fixed, but unobserved state-specific factors affecting participation; φ_{tk} is a set of indicators for each year to control for macroeconomic and policy factors that affect all households the same in a given year but differ over time; and u_{ijtk} is a random error term. While our ultimate focus is on joint program participation, we also estimate equation (1) separately for SNAP alone and EITC plus CTC alone.

The primary data used in our study come from the CPS ASEC for calendar years 1980 to 2012 (interview years 1981 to 2013). The CPS is a monthly survey of the U.S. labor force based on a stratified random sample of 60,000 households, with the ASEC fielded in March of each year (and with some portion from the February and April samples) to collect information on household income, family structure, and health insurance in the prior calendar year. The CPS has a rotating sample design whereby respondents are in-sample for 4 months, out-of-sample for 8 months, and then in-sample for 4 more months. This makes it possible to match up to one-half of the sample from one ASEC interview to the next, and thus creating a series of two-year (biennial) panels. This will form our measure of longer-term participation in welfare.

To help ensure we are matching ASEC households properly, we follow the procedure recommended by the Census Bureau and extended by Madrian and Lefgren (1999). Specifically, we match individuals based on eight variables: month in sample (months 1–4 for year 1, months 5–8 for year 2); gender; age; race; state of residence; line number (unique person identifier); household identifier; and household number. We delete observations as incorrect matches if the age of the person falls, or if it increases by more than two years (owing to the staggered timing of the initial and final interviews). In addition, we drop observations if state of residence changes since the CPS is an address-based survey and thus does not follow movers, whether in-state or out-of-state. The implication of the latter is that we are capturing non-moving survey respondents over a two-year period, which is likely to result in an understatement of participants of transfer programs, at least among nonworking transfer households who tend to move at higher frequency. As discussed below, we attempt to control for these possible influences by re-weighting the data. Due to major survey redesigns in the mid-1980s and mid-1990s, we cannot match across the 1985–1986 and 1995–1996 waves, yielding 30 years of matched data.

In the ASEC, SNAP is asked at the household level; specifically, whether anyone in the household received SNAP in the last calendar year. It is possible for a household to contain more than one SNAP unit, or for only a subset of members to be on assistance. With our focus on the family we make the implicit assumption of resource sharing within the household such that all members benefit from SNAP even if they are not directly a recipient. Ziliak (2015b) shows that from 1980 to 2000, population-weighted participation rates were broadly comparable to administrative data, but over the past decade there has been a divergence in the levels, though not in trends (the levels gap was previously highlighted in Wheaton (2007) and Meyer et al. (2014)). Information on the EITC and the refundable portion of the CTC are not collected in the ASEC, and thus we rely on simulated eligibility based on the NBER's TAXSIM model.⁴ The assumption in TAXSIM is that take-up rates are 100 percent, when in fact they are closer to 80 percent, though take-up in the EITC is lowest for those who receive a lower tax bill and not a refundable credit (Jones 2014). That is, for the EITC and CTC we focus on eligibility rates rather than actual participation, but for convenience we will refer to these as EITC/CTC participation rates. As we are interested in the persistence of participation over time, we construct an indicator of whether the family is receiving SNAP for both years they are in the sample. Since the CTC was not in effect until 1998, we combine these two refundable credits to construct an indicator for whether a family receives either or both the EITC or the CTC in both years (we refer to this combined program as EITC/CTC). Our broader measure of the safety net then is an indicator variable for whether the family receives SNAP *and* the EITC/CTC in both years. For

⁴ The focus on federal EITC is informative for understanding state-EITC participation and eligibility as well given that, by construction, almost all state EITC programs allocate refunds using federal rules and as a fixed proportion of federal EITC received (Johnson and Williams 2011).

comparability, we estimate models of SNAP eligibility and describe these results in a separate section below on sensitivity analysis.

Because our interest is on individuals at risk of transfer-program participation with dependent children, the overall baseline sample consists of individuals between the ages of 20 and 55. This yields 694,278 matches across the 30-year sample, or 23,190 on average per year for a 55 percent average match rate (see Appendix Table 1). This rate is in line with others who have utilized matched samples from the ASEC, and as noted by Feng (2008), is actually artificially low because of the inclusion of the SCHIP oversample beginning in 2000 who are not eligible for a ASEC-to-ASEC match but are included in the denominator in Appendix Table 1.⁵ We further restrict the main analysis sample to those individuals who are the head of household in both years and who have at least one never-married child under age 18 in both years. These two restrictions reduce the sample to 176,072 matched pairs, with head of household having the largest effect on the sample size. Appendix Table 2 compares demographic characteristics of the matched and unmatched ASEC sample. While we find the samples to be qualitatively similar on demographics, the matched sample is slightly older, better educated, and less likely to be Hispanic. There are fewer female headed families and more married families in the biennial merged ASEC as well. As such, this suggests that our findings with respect to the role of the economy could be attenuated via a slightly more socio-economically advantaged sample. To control for this possible selection bias, we adjust the ASEC person weight by the inverse

⁵ When the Census Bureau added the SCHIP oversample to the CPS they were not necessarily assigned unique household ID numbers and thus many households shared ID numbers. A second household identifier was added to the survey starting in 2006, which in combination with the original household ID, improves identification of the same household (Feng 2008).

probability of selection into the second year of the sample, which is a general approach to control for selection on observables in missing data (Wooldridge 2007).⁶

Within this sample we consider three additional subsamples: low-income families defined as having family income-to-needs below 200 percent of the federal poverty line in each of the two years; low-education families defined as those whose head has a high school diploma or less; and single mother families.⁷ The longer-term low-income sample is of interest because federal gross-income eligibility for SNAP for the non-elderly is capped at 130 percent of the household-specific poverty line, but since 2000 many states implemented broad-based categorical eligibility that lifted gross income tests to 150-200 percent of the poverty line. Many low-income families fall within this category; roughly 1 in 4 sample respondents lie within this threshold for both years (see Appendix Table 3). Moreover, the under 200 percent of poverty subpopulation is the group that generally qualifies for the EITC. However, we recognize that this low-income sample may be endogenous with SNAP and EITC/CTC participation in that the programs are means tested. Thus, we also present the low-education sample on the standard assumption that education attainment is a proxy for permanent income, with high school or less signaling high-risk for program participation (Bloome and Western 2011; Corcoran 2001; Hoynes, et al. 2006). Last, we present the single mother subsample as this was the group most affected by the 1990s welfare reforms and expansion of the EITC/CTC.

The demographic controls in equation (1) include indicators for the household head's age (ages 20–34 is the omitted group), education attainment (relative to high school dropout), race (relative to white), Hispanic ethnicity, female headship, and marital status (relative to

⁶ Specifically we estimate a logit model of the probability of a match from year 1 to year 2 as a function of the demographics in Appendix Table 2 such as age, education, gender, race, ethnicity, marital status, metro status, and state fixed effects. We then divide the ASEC supplement weight by the fitted probability of a match.

⁷ Single mother families are defined as such if the mother heads the family, alone, in years 1 and 2.

widowed/separated/divorced/never married); the number of persons in the household (includes non-family members), the number of related children under age 18, residency within a metropolitan area, and within a metro area, residence in the central city to capture within-metro heterogeneity.⁸ All of these measures are based on year one of the match.

The measures of state labor-market conditions include the contemporaneous unemployment rate, along with one and two-year lags in order to capture potential business-cycle dynamics; the fraction of persons working full-time, part-time, and out of the labor force; and median wages as the focal measures of cyclical and structural changes in the macroeconomy. The key policy variables at the state and federal level include the larger of the real state or federal minimum wage rate, the maximum subsidy rate for the EITC based on year and number of qualifying children, whether the state offers a refundable state EITC, and the family-size specific maximum SNAP benefit. Even though it is set nationally, the EITC subsidy rate is identified by the fact that it varies over time and by the number of qualifying children (Hotz and Scholz 2003). For the SNAP policy variables, we assign the real maximum benefit guarantee for a 1, 2, 3, or 4 person household based on family size (the 4-person guarantee is assigned to households with 4 or more persons) to measure the financial generosity of the program. Like the EITC subsidy rate, the SNAP benefit is identified in the model because it varies over time and by household size.⁹ We also include indicators for: (i) whether a state implemented a waiver from its AFDC program; (ii) when its TANF program was implemented; (iii) a host of SNAP policy variables such as the fraction of SNAP dollars redeemed via the EBT, indicators for whether the

⁸ With the 1994 survey, the CPS also asked about country of birth. Because the variable is only available for two-thirds of the sample period, we do not include it in our main analyses. We do, however, report the counterfactual simulations for 2000-2012 inclusive of nativity status in Appendix Tables 9 and 10, with no substantive change in results reported below.

⁹ Because most research finds little evidence that marriage or fertility responds endogenously to the generosity of welfare benefits (Hoynes 1997; Lopoo and Raissan 2014; Moffitt et al. 1998; Bitler, et al, 2004), the family-size specific EITC and SNAP parameters are treated as exogenous in the model.

state allows broad-based categorical eligibility, noncitizen SNAP eligibility, whether it imposes short recertification periods of 3 months or less for households with a working member, whether the household must be fingerprinted (either statewide or partial state), whether the household is disqualified for being sanctioned by another program such as TANF, whether the state adopted simplified reporting, whether it excludes the full value of a vehicle for eligibility, and the real value of spending on outreach; and (iv) whether the Governor was a Democrat.¹⁰ Our choice of SNAP policy variables is consistent with those employed throughout the literature (e.g. Ganong and Leibman 2013; Ratcliffe et al. 2008) to account for both positive and negative administrative and remunerative policy incentives driving program participation. Basic summary statistics on the variables used in the regression analysis for each sample are presented in Appendix Table 3.

IV. Results

A. Biennial SNAP, EITC, and CTC Participation

We begin our results section with a descriptive analysis of two-year trends in SNAP, the EITC, and the CTC, and joint program participation. Because analysis of biennial program participation is a key contribution of our study, an examination of trends in participation is of interest on its own.

[Figure 1 here]

Figure 1 depicts trends in SNAP, EITC, and CTC, and combined SNAP and EITC/CTC participation for each of our samples across the two-year matches in the ASEC. Each of the panels in the figure shows strong secular increases in biennial use of the EITC/CTC starting after

¹⁰ The data on the state economic and policy environment are obtained from the University of Kentucky Center for Poverty Research (<http://www.ukcpr.org/data>), while the SNAP policy variables come from the Economic Research Service in the U.S. Department of Agriculture (<http://www.ers.usda.gov/data-products/snap-policy-database.aspx#UhQQ-ZLVC3I>). All income and spending data are deflated by the 2010 Personal Consumption Expenditure Deflator from (http://www.whitehouse.gov/sites/default/files/docs/erp2013/ERP2013_Appendix_B.pdf).

the first expansion in the Tax Reform Act of 1986, with a subsequent surge after the 1993 expansions (note the different scales for each panel). Over the whole sample period, biennial participation in the EITC/CTC more than doubled for the sample overall and for the low-income subsample, more than tripled for the low-education group, and rose a substantial 48 percent among single mother families. There are substantive differences in the level of participation, with rates nearly twice as high among the low-income sample as compared to the low-skill sample, and with rates among single mothers falling in between (though closer to the low-skill rates). For the low-income sample, biennial participation in the EITC and CTC peaks in 2006, whereas for the single mother sample biennial participation in the EITC and CTC peaks in 2008 and has fallen in the subsequent years. For all families, EITC and CTC participation stabilizes towards the end of the sample period. While tax credit participation appears to be more secular than cyclical, we test this formally in our subsequent empirical analysis.

The biennial trends in SNAP in Figure 1 are considerably different than the EITC and CTC. First, much like one finds in annual participation rates in Ziliak (2015b), there is evidence that biennial SNAP participation responds counter-cyclically with the health of the macroeconomy, with increases evident in the years surrounding recessions. This holds across all four samples. Second, changes in SNAP participation from 1981 to 2012 are substantial, though at a 50 percent increase, growth in participation lags behind the overall rise in EITC and CTC participation. And, in fact, among single mothers, biennial SNAP participation rates fell 3 percentage points over the past 30 years. Third, biennial SNAP participation increased aggressively in response to the Great Recession, and remains at elevated levels.

Rates of joint participation in SNAP, EITC, and CTC are lower than either program in isolation. However, there was a dramatic 180 percent increase in joint participation over the past

three decades across all families, led in part by the 250 percent increase from 3.5 percent to 12.1 percent among low-skilled family heads. Among single mothers, the 90 percent increase in joint program participation meant that by 2012 16 percent of single mother families relied on both programs for two year. The figure suggests that joint participation moves with the business cycle more like SNAP than the EITC, and again like SNAP alone, there was a very substantial increase in joint participation with the onset of the Great Recession.

In order to further assess and decompose the prevalence of biennial program use, we construct a transition matrix of program participation, shown in Appendix Table 4. The rows in the table sum to 100 percent, subject to rounding error. In it, we find that during the 1980s 47 percent of families receiving SNAP and EITC/CTC in year 1 subsequently receive both programs in year 2. Year 2 dual program participation, conditional on year 1 participation, subsequently rises to 52 percent of families in the 1990s and 54 percent of families in the 2000s. We also see a fair amount of churn in program use across years. For example, SNAP receipt in year 1 seems to be more of a gateway to joint program use in year 2 (because individuals combine work and SNAP) than year 1 EITC participation alone, and joint program use in year 1 is more likely to result in EITC alone in year 2 than SNAP alone.

B. Employment and Wages

Because eligibility for participation in the EITC and CTC is work conditioned and income tested, and SNAP is means tested, an obvious place to look for evidence of changes in participation in those programs is changes in macroeconomic labor-market conditions. The top panel of Figure 2 presents trends in state unemployment rates (right-axis) along with state-level averages in the fraction of the sample with continuous (i.e. biennial) full-time employment, continuous part-time employment, and continuous status of not in the labor force (nilf). The

unemployment rate series is that estimated by the Bureau of Labor Statistics from the CPS, Current Employment Statistics, and state Unemployment Insurance claims data.¹¹ The full-time, part-time, and not-in-labor-force series are estimated from our CPS sample of matched individuals (i.e. 465,091 pairs) and aggregated up to capture state differences over time in employment opportunities as reflected in the intensity of labor-market attachment.

[Figure 2 here]

There are substantial swings in state unemployment rates with the business cycle in Figure 2, and these swings coincide with changes in biennial SNAP participation in the previous figure. Importantly, while the peak unemployment rate in the Great Recession actually was slightly below that of the 1981-82 recession, the run-up of unemployment in the most recent downturn was much larger, and recovery much smaller, each of which could account for the sustained levels of transfer-program participation in the 2000s. Likewise, there are substantive changes in state labor-market opportunities over time in terms of full-time and part-time employment, and complete labor-force exit. While a cyclical component of continuous full-time employment is in evidence in the figure, there also appears to be a change in secular trends, with the pre-2000 period exhibiting increases in biennial full-time work, and then a reversal in the post-2000 period. The latter seems to have been met more by a secular increase in labor-force withdrawal than in part-time work. This could help account for the more rapid growth in SNAP compared to the EITC and CTC since SNAP has no explicit work requirement (except for ABAWDS).

The second panel of Figure 2 depicts trends in state-level compensation for low- and middle-skill workers. Specifically, we present inflation-adjusted state minimum hourly wage

¹¹ See <http://www.bls.gov/lau/lauov.htm> for details on construction of state unemployment rates.

rates along with the inflation-adjusted state median biennial average hourly wage.¹² The figure shows that the first two decades of the sample were a period of secular growth in median wages, but since 2000 there has been a flattening out and then decline in hourly wages of the typical worker—the median real wage in 2012 was the same as in 1998. Wage opportunities among the least skilled also declined sharply in real terms in the 1980s when the nominal federal minimum remained fixed at \$3.35 per hour and few states’ minimum wages deviated from the federal rate. It then held steady for the next eighteen years until the Great Recession when both the federal government and states increased the minimum. However, the average real state minimum wage was actually ten cents per hour lower in 2012 than in 1981. The stagnation of wages in the bottom half of the income distribution points both to increased eligibility and need for assistance from SNAP and the EITC and CTC.

To gauge the importance of this growth in biennial joint program participation for family budgets, the bottom panel of Figure 2 presents trends in the ratio of biennial average benefits from SNAP, the EITC, and the CTC to biennial average family earnings among those with positive labor earnings in both years. The figure makes clear that the programs are increasingly “filling the gap” for low-income and low-skill families. Assistance from these programs had the effect of raising family earnings by 25 percent in 2012 among low-income families—a 9-fold increase from three decades earlier.

C. Regression Results

We next turn to our regression results from estimating equation (1) via linear probability, where we correct the standard errors for heteroskedasticity and within-state autocorrelation

¹² For the minimum wage we use the maximum of the state and federal minimum in each state and year, and for the median wage we compute the average annual hourly wage across the two years for each matched individual in the CPS and then compute the median in each state and year. We use the personal consumption expenditure deflator with 2010 base year to adjust for inflation.

arising from the fact that multiple households are present in each state. All models control for fixed state and year effects and are weighted using person level sampling weights adjusted for the probability of year 2 selection on observable demographics, conditional on year 1 selection.

Table 1 presents estimates for the biennial SNAP participation models for each of the four samples. Comparing across columns there is considerable consistency in the marginal effects of the family-level variables on the probability of participating in SNAP for two consecutive years. Namely, participation in SNAP is lower for older heads, those with higher education attainment, for whites and non-Hispanics, for larger households, and for married heads. Participation is higher for female-headed families and for families with more related children under age 18. We note that the magnitude of the coefficients differs because the baseline probabilities vary substantially across samples—average SNAP participation is 0.084, 0.302, 0.139, and 0.287 for the sample overall, for low-income, low-education, and single mother headed families, respectively (see Appendix Table 3).

[Table 1 here]

The estimates in Table 1 provide strong evidence that biennial SNAP participation is countercyclical with respect to the state unemployment rate, which is consistent with annual estimates from pooled cross-sectional data (Ganong and Liebman 2013; Ziliak 2015b). For example, in the full sample a one percentage point increase in the unemployment rate that persists two years leads to a 0.63 point increase in biennial SNAP participation (the sum of the three coefficients on the unemployment rate).¹³ It is often more convenient to express this as an

¹³ A Wald test of the null hypothesis that the three unemployment rate coefficients are jointly zero is rejected at < 0.001 level.

elasticity.¹⁴ The elasticity of continuous SNAP participation with respect to the 2 year lagged unemployment rate is 0.47 for the full sample of family heads (see bottom of Table 1 for elasticities); that is, a 10 percent increase in unemployment results in a 4.7 percent increase in biennial SNAP participation. This business cycle relationship persists for the remaining categories, with an elasticity range of 0.44 (low income heads) to 0.47 (single-mother heads). The positive relationship between the proportion of the state’s labor market that is out-of-the-labor force and continuous SNAP participation rates is statistically significant for all but single mother headed families, and their SNAP out-of-the-labor force elasticity is 0.20, which is similar to that of all heads (0.20) and less educated heads (0.24) and less than low income heads (0.38). These results are broadly consistent with those in Ziliak (2015b) and Bitler and Hoynes (2016), showing that SNAP performs in a countercyclical nature—with unemployment as the business cycle indicator—during the Great Recession. We find this result holds for unemployment as well as the proportion out of the labor force, and that this occurs over a 30-year period inclusive of but not limited to the 2007-2009 Great Recession. In these and remaining empirical models, we depart from Ziliak (2015b) by estimating a broader set of structural economic, policy, and demographic variables for dual program participation over two years, including additional controls for part-time employment, labor force status, and an indicator for state EITC—stratified by the adult head’s income level, educational attainment, and marital status.

Across all samples except low-income, increased generosity of the EITC leads to lower continuous SNAP use, with elasticities ranging from -1.27 in the full sample to -0.48 among single mothers. Because the generosity of the recipient’s SNAP benefit is not reduced by the size

¹⁴ Extending the notation in equation (1), for any given continuous regressor z_k the elasticity of participation in program y_k (SNAP, EITC, and CTC) equals $\delta_k \left(\frac{z_k}{\bar{y}_k} \right)$, where \bar{z}_k and \bar{y}_k reflect mean values of the policy variable and dependent variable, respectively.

of the EITC, this reflects a behavioral response to increasing work and reducing food stamps rather than a mechanical relationship between the EITC and SNAP allotments. On the other hand, increases in the generosity of the SNAP benefit lead to increases in SNAP participation for all samples, consistent with demand theory. The elasticity of continuous participation with respect to the SNAP benefit generosity ranges from 0.30 for single mothers and 0.84 for low-skilled heads, to 1.62 for the sample overall. The greater responsiveness of the full sample compared to the more disadvantaged subsamples stems in part from more permanence in SNAP use among disadvantaged groups. Most of the other SNAP policy variables have no statistically significant effect on continuous participation, with a few exceptions such as simplified reporting and outreach spending.¹⁵ Across all samples, residing in a state with a Democrat as Governor is associated with higher odds of continuous SNAP use, which may reflect overall state climate governing program access.

[Table 2 here]

Table 2 contains the parallel set of results for biennial participation in the EITC and CTC programs. In general the results of the family-level demographic factors are similar between the SNAP models of Table 1 and the EITC/CTC models of Table 2, with some notable exceptions where low-income and single-mother families differ from the low-skilled and families in general. For example, among these families there is no significant difference between older and younger heads, but participation is increasing in education attainment, and is higher among married heads. The positive association between education and EITC/CTC use among the poor is

¹⁵ Outreach spending has an unexpected negative sign. Ziliak (2015b) finds a similar result in the study of cross-sectional SNAP participation, attributing this to the federal response to SNAP during the Great Recession as the coefficient is the expected positive sign if the sample period stops in 2006.

consistent both with greater program knowledge and labor-force attachment (Chetty et al. 2013; Moffitt 2015b).

Among the state and federal economic and policy variables, there are also several key differences from the SNAP models. For example, across all samples the quantitative effect of state unemployment rates on EITC and CTC participation is considerably smaller in absolute value than the SNAP alone models (see the elasticities in the lower panel) and generally statistically insignificant. This implies that SNAP functions more as an automatic stabilizer than refundable tax credits. This is further underscored by the different qualitative associations—EITC and CTC participation is generally a-cyclical with respect to the state unemployment rate as demonstrated by the elasticities.^{16,17} Another key difference in Table 2 from the SNAP models is the consistently strong effect of the share of part-time workers on the odds of continuous EITC and CTC participation, buttressing the result that the program serves as a longer-term work support for those in longer-term part-time employment.

The estimates in Table 2 show economically important own and cross-price effects with respect to program generosity. That is, continuous participation in the EITC/CTC is strongly positively associated with the generosity of the EITC phase-in subsidy rate, and negatively associated with the generosity of SNAP (though smaller in absolute value). As shown in Appendix Table 3 there are large differences in biennial participation rates in the EITC and CTC across samples, ranging from 16 percent among all families to 53 percent among low-income families. The associated elasticities of continuous EITC/CTC participation with respect to the

¹⁶ Wald tests of the joint hypothesis that the three unemployment rate coefficients are zero is rejected at the 0.07, 0.10, 0.002, and 0.08 level for all, low-income, low-skill, and single mother families, respectively.

¹⁷ In an independent analysis conducted concurrent to this initial draft of this paper, Bitler, Hoynes, and Kuka (2014) used annual cross-sections of IRS Statistics of Income data and found that single-year EITC participation was acyclical for single mother families and countercyclical among married-couple families.

phase-in rate range from 1.15 among single mother families to 0.76 among low-income families. The estimate for single mothers is equivalent to the estimate of 1.1 in Meyer and Rosenbaum (2001), even though our study differs in that we are examining both the EITC and CTC for two consecutive years as opposed to single-year use of the EITC alone, and our study covers an additional 18 years of data when single mothers' employment rates were much higher than in the 1980s and early 1990s. To our knowledge we are the first to estimate such elasticities for the wider low-skilled and low-income populations. The corresponding elasticities of EITC/CTC with respect to the SNAP maximum benefit range from -0.19, -0.35, -1.30, and -1.35 for low-income, single-mother, low-skill headed families, and all families, respectively.

We find positive associations of TANF implementation with continuous EITC/CTC participation among single-mother family heads, which aligns with the wider cross-sectional welfare literature that found higher labor force participation in response to TANF implementation (Blank 2009). SNAP policy has no additional consistent association with EITC participation across groups when examining the remaining policies, as neither program benefit is counted as resources in determining the other program's benefit.

[Table 3 here]

Table 3 examines the determinants of joint participation in SNAP, EITC, and the CTC across two years. Here we see an interesting mix of estimates where in some cases the coefficients align with the SNAP-alone models and others the EITC/CTC models. For example, qualitatively all of the coefficients on the demographic factors align with the continuous SNAP models, though the magnitudes are attenuated for age, education, race/ethnicity, household size, gender, and marital status. Also notable is the fact that joint participation in SNAP, EITC, and CTC is countercyclical, similar to our findings in the SNAP-alone models, and though the

coefficients are smaller in magnitude, the corresponding elasticities for biennial lagged unemployment at the mean are comparable, ranging from 0.31 to 0.39.¹⁸ The proportion of the state's labor market that is out-of-the-labor force is now negatively related to joint participation—reflecting the direct relationship between EITC and work. This is consistent with recent work examining EITC eligibility by Jones (2015), who finds that less-educated, single females are likely to experience reduced EITC due to job loss during the Great Recession. Related to this, higher state median wages are now associated with a lowered likelihood of joint program participation, with sizable elasticities; higher earner workers are eventually disqualified from both EITC and CTC and SNAP receipt. The EITC subsidy rate has a much more muted effect on joint participation. The positive coefficient on the maximum SNAP benefit guarantee, like we observed in Table 1, is suggestive that more generous SNAP benefits are associated with higher rates of persistent use of joint program use, underscoring the importance of these programs to the work-based safety net. Although most of the other state SNAP policies have a qualitative positive effect on joint participation, with few exceptions they are not individually statistically significant. Vehicle assets stand out as a formerly unimportant policy in the SNAP-alone models that now positively predict SNAP and EITC/CTC participation for all groups except the full sample, and outreach spending has the expected positive sign. Again as in Table 1, residing in a state with a Democrat as Governor is positively associated with biennial multiple program participation.

D. Counterfactual Simulations: What Accounts for the post-2000 Growth?

In Tables 4-6 we return to the issue of whether or not changes in longer-term SNAP, EITC, and CTC participation since 2000—when dramatic spending increases in both programs

¹⁸ The Wald test of the three coefficients on unemployment being jointly zero is rejected at <0.001 level for all families, low-income, and low skill, and at the 0.034 level for single mothers.

begin to appear—are largely associated with cyclical and structural changes in the macroeconomy, in policy reforms, or in other factors aligned with changing demographics of the American family. We do so by conducting a series of counterfactual simulations based on the parameter estimates from the models in Tables 1 (for SNAP alone), 2 (for EITC and CTC alone), and 3 (for joint SNAP, EITC, and CTC). Specifically, we ask the following question: what would biennial participation in each program alone or in combination be if (i) state economic factors (unemployment rates, rates of full-time/part-time/not in labor force, median wages) had remained fixed at their 2000 values, (ii) if state and federal policies remained fixed at their 2000 values (state minimum wage, EITC subsidy, SNAP benefit, welfare and SNAP reforms), or (iii) if average demographics of the family remained fixed at their 2000 values. Each of the three experiments allow all other factors to change over the 2000–2012 period except for the set of variables being held constant at the 2000 values. We perform these simulations for each of the four samples. As a robustness check, Tables 7 and 8 then repeat the analysis for SNAP alone and joint SNAP and EITC/CTC, but instead use within-period parameter estimates; that is, the models and simulations both use data only from 2000-2012.¹⁹

[Tables 4-6 here]

In Table 4, from 2000 to 2012 biennial participation in SNAP among all families increased 104 percent. If we fixed the state economic factors at their 2000 values, we would have predicted a 37 percent increase in SNAP participation. This implies that changes in the state business cycle accounted for 70 percent ($\approx 100 * (1 - (37/104))$) of the change over the biennial period (note that numbers in the table are rounded to the nearest whole number, and shares do not sum to 1 because some factors, e.g. year and state effects, are not reported). Policy changes

¹⁹ A limitation of the counterfactual simulation is that the observable and unobservable characteristics of the examined subgroups could, themselves, change over time.

are equally important, with a 71 percent share, while demographics have a more modest role of 15 percent (again recall shares do not necessarily sum to 100 percent because of omitted factors). A similar pattern holds for low-income and low-skilled families, though for low-income families the economy is more important (89 percent) than policy (68 percent); for low-skilled families the economy-policy relationship is again evenly split, with 54 percent of SNAP participation explained by changes in the economy, 56 percent explained by policy, and a more substantive 36 percent explained by demographics. Among single mother families, policy changes account for 79 percent of the observed 38 percent growth in biennial SNAP participation, but cyclical and structural labor market factors are associated with 154 percent of the growth. Demographic shifts account for a negative share of the growth, meaning changes in the demographic composition of single-mother families alone actually slowed down the growth of longer-term SNAP participation.

In Table 5 we examine the predictors of biennial EITC and CTC participation alone based upon the parameter estimates in Table 2. In comparison with biennial SNAP participation, the EITC and CTC simulations illustrate that different groups exhibit unique responses. For the full sample, economic and demographic factors are equally important, and this roughly holds for low-skilled family heads. For the low-income sample, policy changes are the most important predictors of EITC and CTC participation. Less educated family heads are roughly evenly impacted by the economy, policy, and demographics. Families headed by a single mother are most sensitive to the economy as it relates to EITC and CTC use; had the economy remained at its 2000 level our models would have predicted 2 percent growth in EITC and CTC, which instead emerged as a 9 percent decline in forecasted participation.

In Table 6 we repeat the exercise, but now predict changes in joint biennial participation in SNAP, EITC, and the CTC based on parameter estimates in Table 3. With the joint participation models, a different picture emerges compared to SNAP or EITC/CTC alone: policy changes over the past decade are associated with the majority of the growth in joint program participation for all group samples. The implication of the simulations is that continued weakness in the labor market, coupled with secular declines in full time work, will likely lead to continued persistence in SNAP participation, but for the subset of families using SNAP, EITC, and CTC over time, policy choices will loom large.²⁰

[Tables 7 and 8 here]

We next use regression parameter estimates with data restricted to 2000-2012 to implement the same simulations as described in Tables 4-6 as a robustness check. If there were structural changes in the relationships between the business cycle and work with welfare use over time then our results could potentially differ. As reported in Appendix Tables 5 and 6, this appears to be the case. Comparing the parameter estimates in those appendix tables to Tables 1 and 3 suggest that the effects of state unemployment are much stronger in the 2000s as compared to the 1980s and 1990s. The implication for the counterfactual simulations reported in Tables 7 and 8 is that the state macroeconomy takes an even more prominent role in accounting for the growth in longer-term program participation. We highlight this effect within the joint SNAP, EITC, and CTC simulations of Table 8 (based on parameter estimates in Appendix Table 6). The macroeconomy is the primary driver when the estimation sample is restricted to the 2000-2012 period, which perhaps is not surprising since most of the policy changes to the EITC

²⁰ Our baseline models require that the head of household remain the same across the two survey waves, which could depress the influence of demographic factors in our simulations. As a robustness check we re-estimated the models in Tables 1 and 3 that relaxed the constant headship requirement, and report the counterfactual simulations in Appendix Tables 7 and 8. As seen in those tables, the results are little changed from the baseline models.

and welfare took place in the 1980s and 1990s while the economy withstood a historic contraction after 2007. Policy choices do explain a substantial portion of joint SNAP and EITC/CTC participation among single mothers and low-income families, although still less than the structural economic factors. In comparison with the baseline simulations, the biennial joint SNAP and EITC/CTC participation models using 2000-2012 regressions may simply pick up the intensity of the Great Recession relative to limited, concurrent policy changes between 2000 and 2012.

E. Sensitivity Analysis

The main results point towards structural economic factors and policy choices over a roughly 30-year period as drivers of biennial participation in SNAP, EITC, and the CTC. Still, there are additional questions governing biennial program participation that can and should be addressed. First, in Appendix Tables 9 and 10, we augment the baseline counterfactual simulations using 2000-2012 regressions for SNAP alone and SNAP with EITC/CTC by adding native born status as a demographic control variable.²¹ Here, we find no meaningful differences in the predicted role of policy, the economy, or demographics.

Next, as discussed previously, the ASEC does not collect information on EITC/CTC participation, and thus we relied on estimates of eligibility from NBER's TAXSIM model. To put the programs on equal footing, we estimate separate models for SNAP *eligibility* for the full sample of families. Because the ASEC does not collect asset information, we confine our analysis to gross-income eligibility. We report the parameter estimates from the simulated SNAP eligibility model alongside the original estimates based on actual participation from Table 1 in Appendix Table 11. We find that the two models are qualitatively similar, although simulated

²¹ Native born status is unavailable prior to 1993, and we therefore only use it in Appendix counterfactual simulations that rely on 2000-2012 regression models.

biennial SNAP participation is slightly overstated among the young, less educated, and racial and ethnic minorities. Most notably, Hispanic ethnicity has no quantitative or statistical effect on actual SNAP participation, while simulated eligibility is 7 percentage points higher than for non-Hispanics. State business cycles are still a large positive predictor of SNAP, but it under-predicts eligibility relative to actual SNAP use. In Appendix Table 12, we re-estimate the joint SNAP and EITC/CTC models, but now rely on eligibility for both programs rather than blending actual SNAP participation with simulated EITC/CTC use. We find the models to again be qualitatively similar, with the caveat that demographics and structural economic components are more strongly associated with joint eligibility. Two exceptions are with respect to EITC and SNAP generosity: the eligibility models predict that higher EITCs increase participation, but higher SNAP benefits do not. The opposite is true for models of joint program participation using actual SNAP participation. As in our baseline models, we apply our 1980-2012 SNAP alone and SNAP and EITC/CTC regression models to simulate joint program eligibility based upon 2000 values of the labor market, policy, and demographics. We report, in Appendix Table 13, a smaller role for structural economic variables – though they still dominate over policy and demographics. This is the case for both SNAP alone and SNAP and EITC/CTC models.

Additional sensitivity checks investigate the potential role of underreported program participation in the CPS. We adjust the SNAP participation regressions and counterfactual simulations with parameters reflecting the degree of survey data underreporting from Meyer, Mok, and Sullivan (2015). Their comparison of survey versus administrative data on participation allows for a set of adjustment factors reflecting SNAP program underreporting in the CPS. In Appendix Table 14, we show the results of our SNAP alone counterfactual simulations augmented with participation adjustments that predict higher SNAP participation.

Overall, these adjusted results yield higher changes in participation rates over the 2000s—139 versus 104 percent—which compared to the baseline in Table 4 is explained slightly more by policy versus structural economic variables for all but single mother families.

Appendix Tables 15-17 conclude our sensitivity checks by expanding the focus of our programs to include cash welfare and disability. First, in Appendix Table 15, we repeat our exercise from Appendix Table 4 where we examine transition rates into and between programs from year 1 to year 2, now inclusive of AFDC/TANF. Next, in Appendix Table 16 we examine the predictors of joint participation in SNAP, EITC, CTC, and AFDC/TANF. We find that the diminished role of and participation in cash welfare after the mid-1990s is reflected in our analysis—transition rates within TANF alone fall from 10.2 percent in the 1980s to roughly 4 percent by the 2000s—and the parameter estimates are attenuated across-the-board upon including AFDC/TANF. The state share part-time work is the largest predictor of participation in all four programs, and education is a smaller, negative predictor as well. This attenuation of the results is more severe when assessing the predictors of biennial participation in SNAP, EITC, CTC, TANF, and SSI, in Appendix Table 17. This stems from the fact that since the 1980s joint participation in these five programs over a two-year period has declined by half, which is in stark contrast to the rising joint participation in the work-based safety-net programs of EITC, CTC, and SNAP emphasized in the main analysis.

V. Conclusion

Our findings lend support to the thesis that longer-term attachment to SNAP, EITC, and the CTC is driven historically by a range of factors beyond short-run cyclicalities, and that socio-economically disadvantaged groups participate in these programs primarily as a result of structural economic factors – relatively stagnant wage growth for low skill workers, and

employment – as well as deliberate federal and state policies that improve the generosity and availability of benefits. Demographic change—notably the rise in female headship and the delay in marriage—is relatively less important. Still, demographics do add to the demand for both programs and are consistently important for low-education families, low-income families, and in models using parameters from the 2000s. At the same time, in the post-2000 period, the business cycle gained in importance relative to policy and demographics and was the dominant factor underlying program growth across family structures.

The lack of recent private sector wage growth in the U.S. is troubling, and work alone without SNAP, the EITC, and CTC would leave low-income working families worse off. A host of recent studies have shown that refundable tax credits improve child outcomes in health, including birth outcomes for mothers, and the learning of young children (Dahl and Lochner 2012; Evans and Garthwhite 2014; Hoynes et al. 2015; Milligan and Stabile 2009). On the opposite side, the lack of resources for teen parents helps explain their accumulating developmental and health disparities (Mollborn et al. 2014). SNAP receipt while in childhood is increasingly shown to improve child health and learning outcomes as well as significantly reduce the incidence of “metabolic syndrome” (obesity, high blood pressure, and diabetes). For women, SNAP has been linked to an increase in economic self-sufficiency (Almond et al. 2011; Hoynes et al. 2015). And finally, higher income during childhood for low-income families has been associated with a range of positive socioeconomic and behavioral outcomes (Akee et al. 2015; Duncan et al. 2011, 2014; Hardy 2014; Cooper and Stewart 2013).

The biennial panel design of our study yields predictors of joint program participation that are less transitory than in annual cross-sectional analysis. This, in turn, has different policy implications and suggests more limited career mobility. Among the most important means-tested

safety net programs are SNAP, EITC, CTC, and TANF. With the decline in TANF, the focus on SNAP, EITC, and CTC—three highly liquid programs—is unique within the literature. To the degree that wages remain stagnant and some workers remain marginally attached to the labor force, reliance and spending on these programs could remain elevated even in the presence of a more robust macroeconomic recovery. If so, the work-based safety net may become an even more permanent fixture for many of America’s vulnerable families, especially those with children. Indeed, outlays on SNAP, EITC, and CTC are forecasted by the Congressional Budget Office (2015) to remain high, roughly \$75 billion and \$94 billion annually in nominal dollars between 2015 and 2025, respectively.²² Many states and local governments have enacted or expanded sub-national EITC programs (Hardy, Muhammad, and Samudra 2015) and have raised minimum wages. There are new proposals to expand child tax credits and to make the CTC permanent and available to all as a child allowance regardless of work (Ziliak 2014; Garfinkel, et al., 2016). Because of this, it is important to continue assessing the role of refundable tax credits and SNAP in the work based safety net (Sawhill and Kapilow 2014a; 2014b).

²² The forecasted spending on the EITC and CTC was before the American Recovery and Reinvestment Act (ARRA) expansions of the CTC, which were set to expire in 2017, were extended indefinitely as part of the federal budget agreement reached in December 2015 (Racidi, 2015).

References

- Almond, D., H. Hoynes, and D. Schanzenbach. 2011. "Inside the War on Poverty: The Impact of Food Stamps on Birth Outcomes," *The Review of Economics and Statistics*, Vol. 93, No. 2: 387-403
- Autor, D. 2014. "Skills, education, and the rise of earnings inequality among the 'other 99 percent'". *Science* 344(6186), pp. 843-851
- Autor, D., L. Katz, and M. Kearney. 2008. Trends in U.S. Wage Inequality: Revising the Revisionists. *Review of Economics and Statistics*, 90(2): 300–323.
- Autor, D., and M.G. Duggan. 2007. "Distinguishing Income from Substitution Effects in Disability Insurance." *American Economic Review* 97(2): 119-124.
- Ben-Shalom, Y., R. Moffitt, and J.K. Scholz. 2012. An Assessment of the Effectiveness of Anti-Poverty Programs in the United States. In *Oxford Handbook of the Economics of Poverty*, P.N. Jefferson, ed. Oxford: Oxford University Press.
- Bitler, M., J Gelbach, M Zavodny and H. Hoynes. 2004. "The Impact of Welfare Reform on Marriage and Divorce." *Demography*, Volume 41, Number 2, pages 213-236, May
- Bitler, M., and H. Hoynes. 2010. "The State of the Social Safety Net in the Post-Welfare Reform Era," *Brookings Papers on Economic Activity* 2, 71–127.
- Bitler, M., and H. Hoynes. 2016. "The More Things Change the More They Stay the Same? The Safety Net and Poverty in the Great Recession." *Journal of Labor Economics* 34(1.2): pp. S403-S444.
- Bitler, M., H. Hoynes, and E. Kuka. 2014. "Do In-Work Tax Credits Serve as a Safety Net?" NBER Working Paper 19785.
- Blank, R. 2009. "What We Know, What We Don't Know, and What We Need to Know about Welfare Reform." In *Welfare Reform and its Long Term Consequences for America's Poor*, (J. Ziliak, ed.), Cambridge, UK: Cambridge University Press, 22–58.
- Bloome, D., & Western, B. 2011. "Cohort Change and Racial Differences in Educational and Income Mobility." *Social Forces* 90(2), 375-395.
- Bureau of Labor Statistics 2014) "Employment Situation – May 2014." http://www.bls.gov/news.release/archives/empsit_06062014.pdf
- Cancian, M., E. Han, J.L. Noyes. 2014. "From multiple program participation to disconnection: Changing trajectories of TANF and SNAP beneficiaries in Wisconsin." *Children and Youth Services Review*, 42, 91-102.

- Congressional Budget Office (CBO). 2013a. Growth in Means-Tested Programs and Tax Credits for Low-Income Households. February.
- Congressional Budget Office (CBO). 2013b. Refundable Tax Credits. January.
- Congressional Budget Office (CBO). 2015. Supplemental Nutrition Assistance Program. CBO Baseline, January 2015.
<https://www.cbo.gov/sites/default/files/cbofiles/attachments/44211-2015-01-SNAP.pdf>
- Cooper, K., and K. Stewart. 2013. Does Money Affect Children's Outcomes? A Systematic Review. October, Joseph Rowntree Foundation, UK, at:
<http://sticerd.lse.ac.uk/dps/case/cr/casereport80.pdf>
- Corcoran, M. 2001. "Mobility, Persistence, and the Consequences of Poverty for Children: Child and Adult Outcomes" in *Understanding Poverty*, S.H. Danziger and R.H. Haveman, eds. Pgs. 127-161.
- Currie, J.M. 2012. "Programs to Address Child Poverty and Their Effects." In *The Oxford Handbook of The Economics of Poverty*, edited by Philip N. Jefferson. Oxford University Press, 277-315.
- Currie, J.M. 2006. *The Invisible Safety Net: Protecting the Nation's Poor Children and Families*. Chapter 1. Princeton, NJ: Princeton University Press.
- Dahl, G.B., and L. Lochner. 2012. The Impact of Family Income on Child Achievement: Evidence from the Earned Income Tax Credit. *American Economic Review*, 102: 1927–1956.
- Duncan, G.J., P. Morris, and C. Rodrigues. 2011. "Does Money Really Matter? Estimating Impacts of Family Income on Young Children's Achievement with Data from Random-Assignment Experiments," *Developmental Psychology* 47 : 1263–79, doi: 10.1037/a0023875.
- Duncan, G., K. Magnuson, and E. Votruba-Drzal. 2014. Boosting Family Income to Promote Child Development. *Future of Children*, 24(1): 99–120.
- Eissa, N., & Hoynes, H. (2004). Taxes and the labor market participation of married couples: the earned income tax credit. *Journal of Public Economics* 88(9), 1931-1958.
- Evans, W.N., and C. Garthwaite. 2014. "Giving Mom a Break: The Impact of Higher EITC Payments on Maternal Health." *American Economic Journal: Economic Policy*, 6(2): 258-90
- Feng, S. 2008. "Longitudinal Matching of Recent Current Population Surveys: Methods, Non-Matches and Mismatches." *Journal of Economic and Social Measurement*, 33(4): 241-252.

- FitzGerald, K. 2013. Snapshot of the Supplemental Nutrition Assistance Program. U.S. Congressional Budget Office. <http://www.cbo.gov/publication/44080>
- Fox, L., Wimer, C., Garfinkel, I., Kaushal, N. and Waldfogel, J. (2015), Waging War on Poverty: Poverty Trends Using a Historical Supplemental Poverty Measure. *Journal of Policy Analysis and Management*, 34(3): 567-592
- Ganong, P., and J. Liebman. 2013. The Decline, Rebound, and Further Rise in SNAP Enrollment: Disentangling Business Cycle Fluctuations and Policy Changes. NBER Working Paper No. 19363.
- Garfinkel, Irwin, David Harris, Jane Waldfogel, and Christopher Wimer. 2016. *Doing More for Our Children: Modeling a Universal Child Allowance or More Generous Child Tax Credit*. March 16. The Century Foundation, NY at <http://tcf.org/content/report/doing-more-for-our-children>
- Gundersen, C, and J. Ziliak. 2004. Poverty and Macroeconomic Performance Across Space, Race, and Family Structure. *Demography*, 41(1): 61-86.
- Hardy, B. 2016. Income Instability and the Response of the Safety Net. Forthcoming at *Contemporary Economic Policy*.
- Hardy, B. 2014. Childhood Income Volatility and Adult Outcomes. *Demography*, 51(5): 1641-1665.
- Hardy, B., Muhammad, D., and Samudra, R. 2015. The Effect of the EITC in the District of Columbia on Poverty and Income Dynamics. Working Paper.
- Heflin, C., P. Mueser, and J. Cronin. 2014. "The Supplemental Nutrition Assistance Program Asset Limit: Reports of its Death may be Exaggerated." University of Missouri, Mimeo.
- Hoyne, H. 1997. "Work, Welfare, and Family Structure: What Have We Learned?" in *Fiscal Policy: Lessons from Economic Research*, edited by Alan Auerbach. MIT Press: Cambridge, Mass, 101-146.
- Hoyne, H.W., Page, M.E., and A. Huff Stevens. 2006. "Poverty in American: Trends and Explanations." *The Journal of Economic Perspectives* 20(1):47-68.
- Hoyne, H., D. Schanzenbach, and D. Almond. 2016 "Long Run Impacts of Childhood Access to the Safety Net" July, *American Economic Review*, 106(4): 903-934.
- Hoyne, H., and D. Schanzenbach. 2009. "Consumption Responses to In-Kind Transfers: Evidence from the Introduction of the Food Stamp Program." *American Economic Journal: Applied Economics* 1(4): 109-139.

- Hotz, V. J., and J.K. Scholz. 2003. The Earned Income Tax Credit. In *Means-Tested Transfer Programs in the U.S.*, ed. R. Moffitt, Chicago: University of Chicago Press, 141–198.
- Johnson, N., and E. Williams. 2011. “A Hand Up: How State Earned Income Tax Credits Help Working Families Escape Poverty in 2011.” Center on Budget and Policy Priorities.
- Jones, M. 2015. The EITC over the Great Recession: Who benefited? U.S. Census Bureau November 15, 2015.
- Jones, M. 2014. Changes in EITC eligibility and participation, 2005–2009. U.S. Census Bureau, CARRA Working Paper #2014-04.
- Kreider, B., Pepper, J.V., Gundersen, C., & Jolliffe, D. 2012. Identifying the Effects of SNAP (Food Stamps) on Child Health Outcomes When Participation is Endogenous and Misreported. *Journal of the American Statistical Association* 107:499, 958-975
- Larrimore, J., R. Burkhauser, and P. Armour. 2013. Accounting For Income Changes Over The Great Recession (2007-2010) Relative To Previous Recessions The Importance of Taxes and Transfers, NBER Working Paper 19699, December.
- Leftin, J., E. Eslami, and M. Strayer. 2011. Trends in Supplemental Nutrition Assistance Program Participation Rates: Fiscal Year 2002 to Fiscal Year 2009. Mathematica Policy Research, Washington, DC. Report submitted to U.S. Department of Agriculture, Food and Nutrition Service.
- Lopoo, L., and K. Raissan. 2014. “U.S. Social Policy and Family Complexity.” *Annals of the American Academy of Political and Social Science* 654(1): 213-230.
- Madrian, B., and L. Lefgren. 1999. “A Note on Longitudinally Matching Current Population Survey (CPS) Respondents.” NBER Working Paper 247.
- Meyer, B., Mok, W., and Sullivan, J. 2015. “Household Surveys in Crisis.” NBER Working Paper 21399
- Meyer, B., Goerge., R.M., and N. Mittag. 2014. “Errors in Survey Reporting and Imputation and their Effects on Estimates of Food Stamp Program Participation,” U.S. Census Bureau, Center for Economic Studies, CES 11-14, Washington, DC.
- Meyer, B., and D. T. Rosenbaum. 2001. “Welfare, the Earned Income Tax Credit, and the Labor Supply of Single Mothers.” *Quarterly Journal of Economics* 116(3): 1063-1114.
- Milligan, K. and M. Stabile. 2009. “Child Benefits, Maternal Employment, and Children's Health: Evidence from Canadian Child Benefit Expansions,” *American Economic Review*, 99, no. 2: 128–32.

- Moffitt, R. 2013. The Great Recession and the Social Safety Net. *The Annals of the American Academy of Political and Social Science*, 650: 143–166.
- Moffitt, R. 2015a. “Multiple Program Participation and the SNAP Program.” In *SNAP Matters: How Food Stamps Affect Health and Well Being*, J. Bartfeld, C. Gundersen, T. Smeeding, and J.P. Ziliak (eds.), Stanford, CA: Stanford University Press.
- Moffitt, R. 2015b. “The Deserving Poor, the Family, and the U.S. Welfare System” *Demography*, 6 June: <http://link.springer.com/article/10.1007/s13524-015-0395-0>
- Moffitt, R., R. Reville, and A. Winkler. 1998. “Beyond Single Mothers: Cohabitation and Marriage in the AFDC Program.” *Demography*, 35(3): 259-278.
- Mollborn, S., E. Lawrence, L. James-Hawkins and P. Fomby. 2014. “How Resource Dynamics Explain Accumulating Developmental and Health Disparities for Teen Parents’ Children” *Demography*, August, Volume 51, Issue 4 :1199-1224
- National Employment Law Project (NELP). 2014. *The Low-Wage Recovery: Industry Employment and Wages Four Years into the Recovery*. Data Brief 14. April, at: <http://www.nelp.org/page/content/lowwagerecovery2014/>
- Piketty, T., and Saez, E. 2003. Income Inequality in the United States, 1913–1998. *Quarterly Journal of Economics*, 118: 1–39.
- Racidi, Angela. 2015. “Budget deal is good for low-income working families” American Enterprise Institute, December 15th at <http://www.aei.org/publication/budget-deal-is-good-for-low-income-working-families/>
- Ratcliffe, C., McKernan, S., and K. Finegold. 2008. Effects of Food Stamp and TANF Policies on Food Stamp Receipt. *Social Service Review* 82(2): 291-334.
- Sawhill, I., and Q. Karpilow. 2014a. Raising the Minimum Wage and Redesigning the EITC. Brookings Institution. January 30, 2014: <http://www.brookings.edu/research/papers/2014/01/30-raising-minimum-wage-redesigning-eitc-sawhill>
- Sawhill, I., and Q. Karpilow. 2014b. Building a Better EITC. The Brookings Institution - Posted June 10, 2014: <http://spotlightonpoverty.org/spotlight-exclusives/building-a-better-eitc/>
- Slack, K.S., B. Kim, M. Yang, and L.M. Berger. 2014. “The economic safety net for low-income families with children.” *Children and Youth Services Review*, 46, 213-219.

- Steuerle, E. 2015. “Marginal Tax Rates and 21st Century Social Welfare Reform.” Statement before Joint Hearing of the Subcommittee on Human Resources—Committee on Ways and Means, and Subcommittee on Nutrition—Committee on Agriculture.
- Tach, L., and A. Eads. 2015 “Trends in the Economic Consequences of Marital and Cohabitation Dissolution in the United States” *Demography*, 52, Issue 2, April: 410-432
- Tiehen, L., Jolliffe, D., and T. Smeeding. 2015. “The Effect of SNAP on Poverty.” In *SNAP Matters: How Food Stamps Affect Health and Well Being*, J. Bartfeld, C. Gundersen, T. Smeeding, and J.P. Ziliak (eds.), Stanford, CA: Stanford University Press.
- Wheaton, L. 2007. “Underreporting of Means-Tested Transfer Programs in the CPS and SIPP,” Proceedings of the American Statistical Association, Social Statistics Section [CD-ROM], Alexandria, VA: American Statistical Association: 3622-3629.
- Wooldridge, J. 2007. “Inverse Probability Weighted Estimation for General Missing Data Problems.” *Journal of Econometrics*, 141, Issue 2, 1281-1301.
- Ziliak, J.P. 2014. “Supporting Low-Income Workers through Refundable Child-Care Credits.” In *Policies to Address Poverty in America*, Melissa Kearney and Benjamin Harris (eds.), The Hamilton Project: Brookings Institution, 109-118.
- Ziliak, J. P. 2015a. “Recent Developments in Antipoverty Policies in the United States.” In *Social Policies in an Age of Austerity*, J.K. Scholz, H. Moon, and S. Lee (editors), Cheltenham, UK: Edward Elgar Publishing, 235-262.
- Ziliak, J.P. 2015b. “Why are so Many Americans on Food Stamps? The Role of the Economy, Policy, and Demographics.” In *SNAP Matters: How Food Stamps Affect Health and Well Being*, J. Bartfeld, C. Gundersen, T. Smeeding, and J.P. Ziliak (eds.), Stanford, CA: Stanford University Press.
- Ziliak, J.P., B. Hardy, and C. Bollinger. 2011. “Earnings Volatility in America: Evidence from Matched CPS.” *Labour Economics* 18(6): 742-754.

Figure 1. Trends in Two-Year SNAP and EITC/CTC Participation

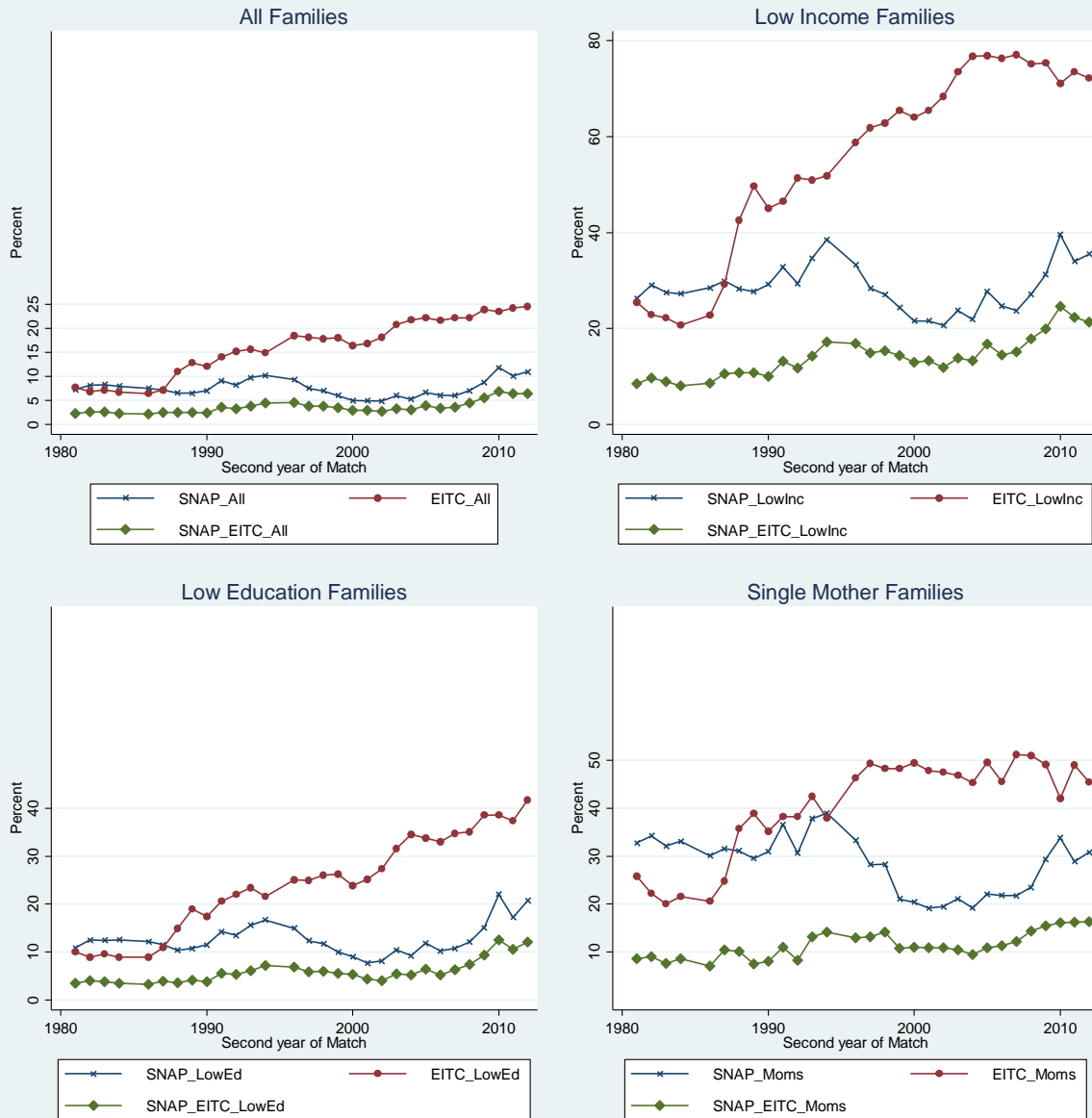


Figure 2. Trends in Employment, Wages and Benefit Replacement Rates

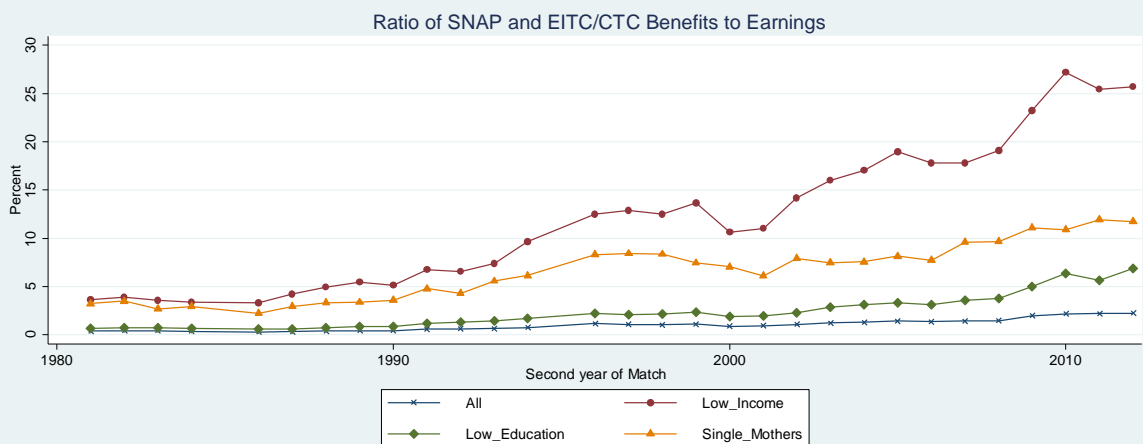
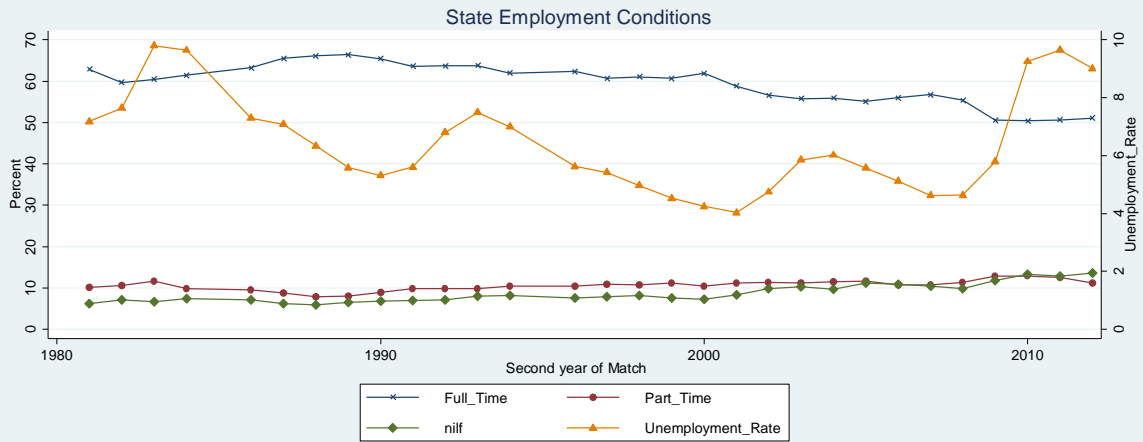


Table 1. Linear Probability Estimates of Biennial SNAP Participation

VARIABLES	All Families	Low-Income Families	Low-Education Families	Single Mother Families
Family Level				
Ages 28-35	-0.0860*** (0.004)	-0.0926*** (0.006)	-0.0935*** (0.005)	-0.1439*** (0.007)
Ages 36-44	-0.1092*** (0.006)	-0.1176*** (0.009)	-0.1177*** (0.008)	-0.1934*** (0.011)
Ages 45-55	-0.0962*** (0.006)	-0.0987*** (0.013)	-0.0974*** (0.008)	-0.1933*** (0.013)
High School Diploma	-0.1179*** (0.005)	-0.1265*** (0.009)	-0.1096*** (0.004)	-0.2081*** (0.006)
Some College	-0.1434*** (0.006)	-0.1589*** (0.012)		-0.2748*** (0.011)
College Graduate	-0.1527*** (0.006)	-0.2402*** (0.014)		-0.3648*** (0.011)
Black	0.0831*** (0.007)	0.1052*** (0.013)	0.1040*** (0.011)	0.1194*** (0.012)
Other Race	0.0317*** (0.007)	0.0590** (0.024)	0.0355** (0.015)	0.0304** (0.013)
Hispanic	0.0077 (0.016)	-0.0115 (0.030)	0.0118 (0.019)	0.0359 (0.029)
Household Size	-0.0219*** (0.002)	-0.0339*** (0.003)	-0.0255*** (0.003)	-0.0456*** (0.005)
Number of Own Kids < Age 18	0.0557*** (0.002)	0.0749*** (0.003)	0.0741*** (0.002)	0.1222*** (0.004)
Female Head	0.0484*** (0.003)	0.0990*** (0.008)	0.0790*** (0.005)	
Married Head	-0.1539*** (0.007)	-0.1780*** (0.010)	-0.1844*** (0.009)	
Lives in Metro Area	-0.0141*** (0.003)	-0.0113 (0.009)	-0.0192*** (0.005)	-0.0453*** (0.011)
Lives in Central City	0.0212*** (0.005)	0.0197 (0.015)	0.0239*** (0.008)	0.0386*** (0.012)
State/Federal Level				
State Unemployment Rate (UR)	0.1703 (0.182)	0.7645 (0.586)	0.1091 (0.303)	0.7835 (0.788)
1 Year Lagged State UR	-0.0757 (0.220)	-0.3199 (0.711)	-0.0172 (0.324)	0.0599 (0.873)
2 year Lagged State UR	0.5362*** (0.122)	1.5629*** (0.424)	0.7809*** (0.195)	1.2783*** (0.460)
State % Full Year Worker	-0.0316 (0.036)	0.0756 (0.126)	-0.0366 (0.065)	0.0327 (0.140)
State % Part Year Worker	0.0620 (0.051)	0.2445 (0.168)	0.1240 (0.088)	-0.1327 (0.178)
State % Not in Labor Force	0.2015*** (0.065)	0.5287** (0.209)	0.2813** (0.108)	0.3139 (0.201)
State Median Wage	-0.0007 (0.001)	0.0016 (0.004)	-0.0016 (0.002)	-0.0016 (0.003)
State Minimum Wage	-0.0029 (0.002)	-0.0048 (0.008)	-0.0086* (0.005)	0.0016 (0.008)
EITC Subsidy Rate	-0.4042*** (0.062)	-0.1791 (0.202)	-0.3508*** (0.098)	-0.5125*** (0.180)

State Has Refundable EITC	-0.0044 (0.005)	-0.0253 (0.016)	-0.0113 (0.008)	-0.0169 (0.015)
Any Welfare Reform Waiver	-0.0052 (0.005)	-0.0198 (0.017)	-0.0090 (0.011)	-0.0037 (0.017)
TANF Implementation	-0.0268*** (0.008)	-0.0805*** (0.028)	-0.0148 (0.018)	-0.0721** (0.032)
Max SNAP Benefit (\$100s)	0.0286*** (0.003)	0.0267*** (0.005)	0.0250*** (0.005)	0.0213*** (0.005)
Implementation of EBT Card	0.0006 (0.004)	0.0103 (0.018)	-0.0018 (0.008)	0.0089 (0.015)
Broad-Based Eligibility	0.0026 (0.005)	-0.0061 (0.012)	-0.0039 (0.008)	0.0142 (0.018)
Short Certification	-0.0009 (0.004)	-0.0058 (0.014)	-0.0080 (0.009)	-0.0045 (0.014)
Requires Fingerprinting	-0.0002 (0.005)	0.0158 (0.016)	0.0008 (0.009)	0.0057 (0.014)
Compulsory Disqualification	0.0036 (0.004)	0.0075 (0.012)	0.0091 (0.007)	-0.0087 (0.012)
Simplified Reporting	0.0128** (0.006)	0.0577*** (0.020)	0.0366*** (0.011)	0.0399* (0.022)
Vehicle Assets Excludable	0.0024 (0.005)	0.0220 (0.015)	0.0129 (0.008)	-0.0016 (0.015)
Outreach (\$100 millions)	-0.0033*** (0.001)	-0.0084*** (0.003)	-0.0043*** (0.001)	-0.0135*** (0.002)
Noncitizens SNAP-eligible	-0.0005 (0.005)	-0.0120 (0.013)	0.0004 (0.007)	0.0029 (0.011)
Governor is Democrat	0.0055*** (0.002)	0.0180*** (0.005)	0.0083*** (0.003)	0.0147** (0.006)

SELECTED ELASTICITY CALCULATIONS FOR SNAP PARTICIPATION

State Unemployment	0.473	0.439	0.408	0.473
State % Full Year Worker	-0.225	0.076	-0.137	0.043
State % Part Year Worker	0.078	0.143	0.105	-0.070
State % Not in Labor Force	0.204	0.378	0.239	0.199
State Median Wage	-0.121	0.075	-0.163	-0.081
State Minimum Wage	-0.225	-0.104	-0.402	0.036
EITC Subsidy Rate	-1.270	-0.158	-0.626	-0.484
State Has Refundable EITC	-0.006	-0.009	-0.008	-0.008
Any Welfare Reform Waiver	-0.003	-0.004	-0.003	-0.001
TANF Implementation	-0.140	-0.115	-0.041	-0.118
Max SNAP Benefit (\$100s)	1.616	0.410	0.844	0.304
Observations	176,072	39,596	80,574	27,522
R-squared	0.229	0.186	0.252	0.244

Standard errors in parenthesis control for heteroskedasticity and within-state autocorrelation. All models control for fixed state and time effects. *** p<0.01, ** p<0.05, * p<0.1. Elasticities are calculated at mean values by group for the selected policy variables.

Table 2. Linear Probability Estimates of Biennial EITC/CTC Participation

VARIABLES	All Families	Low-Income Families	Low-Education Families	Single Mother Families
Family Level				
Ages 28-35	-0.0629*** (0.007)	0.0171 (0.010)	-0.0423*** (0.008)	0.0067 (0.016)
Ages 36-44	-0.0936*** (0.008)	0.0125 (0.011)	-0.0726*** (0.009)	-0.0298 (0.020)
Ages 45-55	-0.0916*** (0.007)	-0.0188* (0.011)	-0.0713*** (0.007)	-0.0568*** (0.016)
High School Diploma	-0.0774*** (0.010)	0.0241*** (0.007)	-0.0741*** (0.008)	0.0406*** (0.013)
Some College	-0.1188*** (0.013)	0.0400*** (0.008)		0.0020 (0.013)
College Graduate	-0.1816*** (0.011)	0.0122 (0.015)		-0.2183*** (0.011)
Black	0.0372*** (0.007)	-0.0182 (0.013)	0.0390*** (0.009)	0.0078 (0.013)
Other Race	0.0378*** (0.006)	-0.0003 (0.016)	0.0312*** (0.011)	0.0071 (0.023)
Hispanic	0.1122*** (0.016)	0.0491* (0.027)	0.1234*** (0.023)	0.0329 (0.023)
Household Size	-0.0092** (0.004)	-0.0213*** (0.007)	-0.0100* (0.006)	-0.0089** (0.004)
Number of Own Kids < Age 18	0.0446*** (0.004)	-0.0224*** (0.007)	0.0476*** (0.006)	0.0197*** (0.007)
Female Head	0.0321*** (0.003)	0.0045 (0.010)	0.0438*** (0.006)	
Married Head	-0.1478*** (0.014)	0.0537*** (0.012)	-0.1173*** (0.016)	
Lives in Metro Area	-0.0499*** (0.004)	-0.0131 (0.010)	-0.0537*** (0.006)	-0.0882*** (0.012)
Lives in Central City	0.0068 (0.007)	-0.0229 (0.015)	0.0049 (0.009)	-0.0055 (0.014)
State/Federal Level				
State Unemployment Rate (UR)	-0.2222 (0.165)	-0.4393 (0.315)	-0.4701** (0.218)	-0.8798** (0.405)
1 Year Lagged State UR	0.1823 (0.286)	-0.2015 (0.675)	0.4810 (0.424)	-0.2477 (0.808)
2 year Lagged State UR	0.1887 (0.188)	0.6851 (0.510)	0.4229 (0.328)	0.5509 (0.615)
State % Full Year Worker	-0.0289 (0.060)	0.1352 (0.150)	-0.0676 (0.088)	-0.0514 (0.153)
State % Part Year Worker	0.1651** (0.077)	0.4578** (0.178)	0.2298** (0.113)	0.2257 (0.224)
State % Not in Labor Force	-0.2067** (0.078)	-0.8560*** (0.224)	-0.3306** (0.146)	-1.0496*** (0.259)
State Median Wage	-0.0119*** (0.002)	-0.0168*** (0.005)	-0.0147*** (0.003)	-0.0286*** (0.006)
State Minimum Wage	0.0008 (0.004)	0.0049 (0.010)	0.0120** (0.006)	-0.0065 (0.010)
EITC Subsidy Rate	1.1056***	1.5172***	1.5727***	1.6342***

	(0.073)	(0.158)	(0.112)	(0.187)
State Has Refundable EITC	-0.0057	-0.0033	-0.0147*	0.0122
	(0.004)	(0.013)	(0.008)	(0.013)
Any Welfare Reform Waiver	-0.0018	0.0182	0.0114	0.0109
	(0.008)	(0.024)	(0.015)	(0.029)
TANF Implementation	0.0160	0.0407	0.0336	0.1006**
	(0.015)	(0.034)	(0.023)	(0.042)
Max SNAP Benefit (\$100s)	-0.0465***	-0.0222***	-0.0647***	-0.0328***
	(0.003)	(0.006)	(0.005)	(0.007)
Implementation of EBT Card	-0.0004	0.0052	-0.0110	0.0481***
	(0.006)	(0.020)	(0.010)	(0.018)
Broad-Based Eligibility	0.0066	0.0004	0.0093	0.0240
	(0.005)	(0.018)	(0.011)	(0.016)
Short Certification	-0.0047	-0.0112	-0.0107	0.0042
	(0.005)	(0.014)	(0.010)	(0.015)
Requires Fingerprinting	0.0046	0.0052	0.0101	0.0011
	(0.006)	(0.016)	(0.011)	(0.013)
Compulsory Disqualification	-0.0005	0.0016	0.0021	0.0054
	(0.004)	(0.014)	(0.009)	(0.016)
Simplified Reporting	-0.0006	-0.0051	-0.0144	-0.0193
	(0.007)	(0.020)	(0.014)	(0.020)
Vehicle Assets Excludable	-0.0031	-0.0206	-0.0099	-0.0006
	(0.005)	(0.017)	(0.010)	(0.015)
Outreach (\$100 millions)	-0.0021	-0.0014	-0.0036	0.0097***
	(0.002)	(0.007)	(0.005)	(0.002)
Noncitizens SNAP-eligible	0.0019	0.0452**	0.0118	0.0030
	(0.008)	(0.019)	(0.014)	(0.018)
Governor is Democrat	0.0006	0.0010	-0.0022	0.0022
	(0.003)	(0.006)	(0.004)	(0.007)

SELECTED ELASTICITY CALCULATIONS FOR EITC/CTC PARTICIPATION

State Unemployment	0.058	0.005	0.121	-0.096
State % Full Year Worker	-0.106	0.077	-0.151	-0.051
State % Part Year Worker	0.106	0.152	0.116	0.088
State % Not in Labor Force	-0.108	-0.347	-0.167	-0.495
State Median Wage	-1.058	-0.445	-0.894	-1.074
State Minimum Wage	0.032	0.060	0.335	-0.110
EITC Subsidy Rate	1.791	0.757	1.674	1.147
State Has Refundable EITC	-0.004	-0.001	-0.006	0.004
Any Welfare Reform Waiver	-0.001	0.002	0.002	0.002
TANF Implementation	0.043	0.033	0.055	0.122
Max SNAP Benefit (\$100s)	-1.354	-0.193	-1.304	-0.348
Observations	176,072	39,596	80,574	27,522
R-squared	0.199	0.162	0.173	0.106

Standard errors in parenthesis control for heteroskedasticity and within-state autocorrelation. All models control for fixed state and time effects. *** p<0.01, ** p<0.05, * p<0.1. Elasticities are calculated at mean values by group for the selected policy variables.

Table 3. Linear Probability Estimates of Biennial SNAP and EITC/CTC Participation

VARIABLES	All Families	Low-Income Families	Low-Education Families	Single Mother Families
Family Level				
Ages 28-35	-0.0385*** (0.005)	-0.0393*** (0.007)	-0.0388*** (0.005)	-0.0412*** (0.012)
Ages 36-44	-0.0500*** (0.006)	-0.0520*** (0.011)	-0.0498*** (0.007)	-0.0591*** (0.013)
Ages 45-55	-0.0482*** (0.005)	-0.0590*** (0.011)	-0.0456*** (0.007)	-0.0711*** (0.014)
High School Diploma	-0.0405*** (0.004)	-0.0369*** (0.007)	-0.0395*** (0.003)	-0.0429*** (0.007)
Some College	-0.0498*** (0.004)	-0.0350*** (0.010)		-0.0597*** (0.008)
College Graduate	-0.0594*** (0.004)	-0.0887*** (0.013)		-0.1071*** (0.008)
Black	0.0295*** (0.004)	0.0355*** (0.010)	0.0364*** (0.006)	0.0424*** (0.009)
Other Race	0.0112*** (0.004)	0.0092 (0.012)	0.0085 (0.007)	-0.0001 (0.013)
Hispanic	0.0053 (0.008)	-0.0168 (0.015)	0.0045 (0.011)	-0.0032 (0.010)
Household Size	-0.0041*** (0.001)	-0.0054* (0.003)	-0.0035* (0.002)	-0.0092** (0.004)
Number of Own Kids < Age 18	0.0196*** (0.002)	0.0189*** (0.004)	0.0245*** (0.003)	0.0273*** (0.005)
Female Head	0.0134*** (0.001)	0.0251*** (0.006)	0.0205*** (0.002)	
Married Head	-0.0554*** (0.004)	-0.0454*** (0.008)	-0.0566*** (0.006)	
Lives in Metro Area	-0.0097*** (0.003)	-0.0064 (0.009)	-0.0107** (0.004)	-0.0282*** (0.009)
Central City	0.0016 (0.003)	-0.0103 (0.010)	-0.0030 (0.005)	0.0005 (0.007)
State/Federal Level				
State Unemployment Rate (UR)	-0.0235 (0.127)	-0.0232 (0.461)	-0.1360 (0.203)	0.1384 (0.437)
1 Year Lagged State UR	-0.1321 (0.159)	-0.5327 (0.543)	0.0556 (0.215)	-0.7222 (0.642)
2 year Lagged State UR	0.3515*** (0.100)	1.2749*** (0.313)	0.4282*** (0.146)	1.1186** (0.456)
State % Full Year Worker	-0.0477 (0.030)	-0.0459 (0.103)	-0.0707 (0.047)	-0.0809 (0.124)
State % Part Year Worker	0.0441 (0.043)	0.2230 (0.164)	0.0712 (0.064)	-0.0795 (0.165)
State % Not in Labor Force	-0.1143** (0.055)	-0.4952*** (0.179)	-0.2103* (0.106)	-0.5098** (0.202)
State Median Wage	-0.0035*** (0.001)	-0.0101*** (0.003)	-0.0066*** (0.002)	-0.0095*** (0.003)
State Minimum Wage	0.0005 (0.002)	0.0053 (0.007)	-0.0003 (0.003)	0.0077 (0.007)
EITC Subsidy Rate	0.0066	0.1210	0.1449	0.1705

	(0.051)	(0.143)	(0.087)	(0.142)
State Has Refundable EITC	0.0001	0.0005	-0.0053	0.0114
	(0.003)	(0.013)	(0.006)	(0.013)
Any Welfare Reform Waiver	0.0009	0.0000	-0.0009	0.0167
	(0.005)	(0.017)	(0.006)	(0.018)
TANF Implementation	-0.0112	-0.0328	0.0027	-0.0066
	(0.008)	(0.028)	(0.012)	(0.033)
Max SNAP Benefit (\$100s)	0.0068***	0.0135***	0.0029	0.0151***
	(0.002)	(0.003)	(0.003)	(0.004)
Implementation of EBT Card	-0.0020	0.0009	-0.0060	0.0094
	(0.003)	(0.011)	(0.006)	(0.013)
Broad-Based Eligibility	0.0032	0.0022	-0.0030	0.0059
	(0.004)	(0.012)	(0.008)	(0.015)
Short Certification	-0.0006	-0.0023	-0.0055	-0.0025
	(0.003)	(0.011)	(0.008)	(0.011)
Requires Fingerprinting	0.0033	0.0119	0.0023	0.0032
	(0.004)	(0.011)	(0.007)	(0.011)
Compulsory Disqualification	0.0018	0.0091	0.0058	-0.0039
	(0.004)	(0.012)	(0.007)	(0.012)
Simplified Reporting	0.0095**	0.0369**	0.0222***	0.0324*
	(0.004)	(0.015)	(0.008)	(0.016)
Vehicle Assets Excludable	0.0053	0.0281**	0.0151**	0.0240**
	(0.004)	(0.013)	(0.007)	(0.011)
Outreach (\$100 millions)	0.0005	0.0024	0.0020*	0.0056**
	(0.001)	(0.004)	(0.001)	(0.003)
Noncitizens SNAP-eligible	-0.0058	-0.0186	-0.0061	-0.0157
	(0.004)	(0.013)	(0.006)	(0.012)
Governor is Democrat	0.0037***	0.0154***	0.0057**	0.0084**
	(0.001)	(0.004)	(0.002)	(0.004)

SELECTED ELASTICITY CALCULATIONS FOR JOINT SNAP AND EITC/CTC PARTICIPATION

State Unemployment	0.334	0.346	0.390	0.314
State % Full Year Worker	-0.772	-0.101	-0.635	-0.283
State % Part Year Worker	0.125	0.288	0.145	-0.110
State % Not in Labor Force	-0.263	-0.781	-0.428	-0.851
State Median Wage	-1.371	-1.042	-1.613	-1.263
State Minimum Wage	0.088	0.253	-0.034	0.461
EITC Subsidy Rate	0.047	0.235	0.620	0.424
State Has Refundable EITC	0.000	0.000	-0.009	0.014
Any Welfare Reform Waiver	0.001	0.000	-0.001	0.008
TANF Implementation	-0.133	-0.103	0.018	-0.028
Max SNAP Benefit (\$100s)	0.872	0.457	0.235	0.567
Observations	176,072	39,596	80,574	27,522
R-squared	0.076	0.049	0.073	0.064

Standard errors in parenthesis control for heteroskedasticity and within-state autocorrelation. All models control for fixed state and time effects. *** p<0.01, ** p<0.05, * p<0.1. Elasticities are calculated at mean values by group for the selected policy variables.

Table 4. Counterfactual Simulations of Changes in Biennial Participation in SNAP from 2000-2012, using 1980-2012 regressions

All Families						
Actual Change (%)	State Labor Market Fixed at 2000 Levels		Policies Fixed at 2000 Levels		Demographics Fixed at 2000 Levels	
	Predicted Change	Share	Predicted Change	Share	Predicted Change	Share
104	37	70	35	71	90	15
Low-Income Families						
Actual Change (%)	State Labor Market Fixed at 2000 Levels		Policies Fixed at 2000 Levels		Demographics Fixed at 2000 Levels	
	Predicted Change	Share	Predicted Change	Share	Predicted Change	Share
56	7	89	19	68	53	8
Low-Education Families						
Actual Change (%)	State Labor Market Fixed at 2000 Levels		Policies Fixed at 2000 Levels		Demographics Fixed at 2000 Levels	
	Predicted Change	Share	Predicted Change	Share	Predicted Change	Share
110	55	54	51	56	51	36
Single-Mother Families						
Actual Change (%)	State Labor Market Fixed at 2000 Levels		Policies Fixed at 2000 Levels		Demographics Fixed at 2000 Levels	
	Predicted Change	Share	Predicted Change	Share	Predicted Change	Share
38	-23	154	9	79	53	-19

Source: Authors' calculations based on parameter estimates in Table 1. Simulations hold identified variables fixed and allow others to vary over time. In each case, the year effects are allowed to vary over time. Shares do not sum to 100% since some factors are omitted.

Table 5. Counterfactual Simulations of Changes in Biennial Participation in EITC/CTC from 2000-2012, using 1980-2012 regressions

All Families						
Actual Change (%)	State Labor Market Fixed at 2000 Levels		Policies Fixed at 2000 Levels		Demographics Fixed at 2000 Levels	
	Predicted Change	Share	Predicted Change	Share	Predicted Change	Share
44	36	20	63	-49	34	19
Low-Income Families						
Actual Change (%)	State Labor Market Fixed at 2000 Levels		Policies Fixed at 2000 Levels		Demographics Fixed at 2000 Levels	
	Predicted Change	Share	Predicted Change	Share	Predicted Change	Share
13	11	16	6	54	4	68
Low-Education Families						
Actual Change (%)	State Labor Market Fixed at 2000 Levels		Policies Fixed at 2000 Levels		Demographics Fixed at 2000 Levels	
	Predicted Change	Share	Predicted Change	Share	Predicted Change	Share
67	48	26	79	-28	36	35
Single-Mother Families						
Actual Change (%)	State Labor Market Fixed at 2000 Levels		Policies Fixed at 2000 Levels		Demographics Fixed at 2000 Levels	
	Predicted Change	Share	Predicted Change	Share	Predicted Change	Share
-9	2	119	-13	-49	-5	42

Source: Authors' calculations based on parameter estimates in Table 2. Simulations hold identified variables fixed and allow others to vary over time. In each case, the year effects are allowed to vary over time. Shares do not sum to 100% since some factors are omitted.

Table 6. Counterfactual Simulations of Changes in Biennial Participation in SNAP and EITC/CTC from 2000-2012, using 1980-2012 regressions

All Families						
Actual Change (%)	State Labor Market Fixed at 2000 Levels		Policies Fixed at 2000 Levels		Demographics Fixed at 2000 Levels	
	Predicted Change	Share	Predicted Change	Share	Predicted Change	Share
104	89	23	6	94	90	9
Low-Income Families						
Actual Change (%)	State Labor Market Fixed at 2000 Levels		Policies Fixed at 2000 Levels		Demographics Fixed at 2000 Levels	
	Predicted Change	Share	Predicted Change	Share	Predicted Change	Share
54	33	42	-28	153	41	24
Low-Education Families						
Actual Change (%)	State Labor Market Fixed at 2000 Levels		Policies Fixed at 2000 Levels		Demographics Fixed at 2000 Levels	
	Predicted Change	Share	Predicted Change	Share	Predicted Change	Share
107	63	43	7	93	51	39
Single-Mother Families						
Actual Change (%)	State Labor Market Fixed at 2000 Levels		Policies Fixed at 2000 Levels		Demographics Fixed at 2000 Levels	
	Predicted Change	Share	Predicted Change	Share	Predicted Change	Share
38	33	23	-66	272	48	-11

Source: Authors' calculations based on parameter estimates in Table 3. Simulations hold identified variables fixed and allow others to vary over time. In each case, the year effects are allowed to vary over time. Shares do not sum to 100% since some factors are omitted.

Table 7. Counterfactual Simulations of Changes in Biennial Participation in SNAP from 2000-2012, using 2000-2012 regressions

All Families						
Actual Change (%)	State Labor Market Fixed at 2000 Levels		Policies Fixed at 2000 Levels		Demographics Fixed at 2000 Levels	
	Predicted Change	Share	Predicted Change	Share	Predicted Change	Share
104	-16	113	52	56	99	1
Low-Income Families						
Actual Change (%)	State Labor Market Fixed at 2000 Levels		Policies Fixed at 2000 Levels		Demographics Fixed at 2000 Levels	
	Predicted Change	Share	Predicted Change	Share	Predicted Change	Share
56	12	118	41	31	59	-2
Low-Education Families						
Actual Change (%)	State Labor Market Fixed at 2000 Levels		Policies Fixed at 2000 Levels		Demographics Fixed at 2000 Levels	
	Predicted Change	Share	Predicted Change	Share	Predicted Change	Share
110	32	78	92	21	62	26
Single-Mother Families						
Actual Change (%)	State Labor Market Fixed at 2000 Levels		Policies Fixed at 2000 Levels		Demographics Fixed at 2000 Levels	
	Predicted Change	Share	Predicted Change	Share	Predicted Change	Share
38	-55	260	18	53	51	-20

Source: Authors' calculations based on parameter estimates in Appendix Table 5. Simulations hold identified variables fixed and allow others to vary over time. In each case, the year effects are allowed to vary over time. Shares do not sum to 100% since some factors are omitted.

Table 8. Counterfactual Simulations of Changes in Biennial Participation in SNAP and EITC/CTC from 2000-2012, using 2000-2012 regressions

All Families						
Actual Change (%)	State Labor Market Fixed at 2000 Levels		Policies Fixed at 2000 Levels		Demographics Fixed at 2000 Levels	
	Predicted Change	Share	Predicted Change	Share	Predicted Change	Share
104	-79	163	11	90	84	15
Low-Income Families						
Actual Change (%)	State Labor Market Fixed at 2000 Levels		Policies Fixed at 2000 Levels		Demographics Fixed at 2000 Levels	
	Predicted Change	Share	Predicted Change	Share	Predicted Change	Share
54	-57	196	-5	109	42	22
Low-Education Families						
Actual Change (%)	State Labor Market Fixed at 2000 Levels		Policies Fixed at 2000 Levels		Demographics Fixed at 2000 Levels	
	Predicted Change	Share	Predicted Change	Share	Predicted Change	Share
107	-63	151	51	54	45	45
Single-Mother Families						
Actual Change (%)	State Labor Market Fixed at 2000 Levels		Policies Fixed at 2000 Levels		Demographics Fixed at 2000 Levels	
	Predicted Change	Share	Predicted Change	Share	Predicted Change	Share
38	-108	344	-51	229	40	5

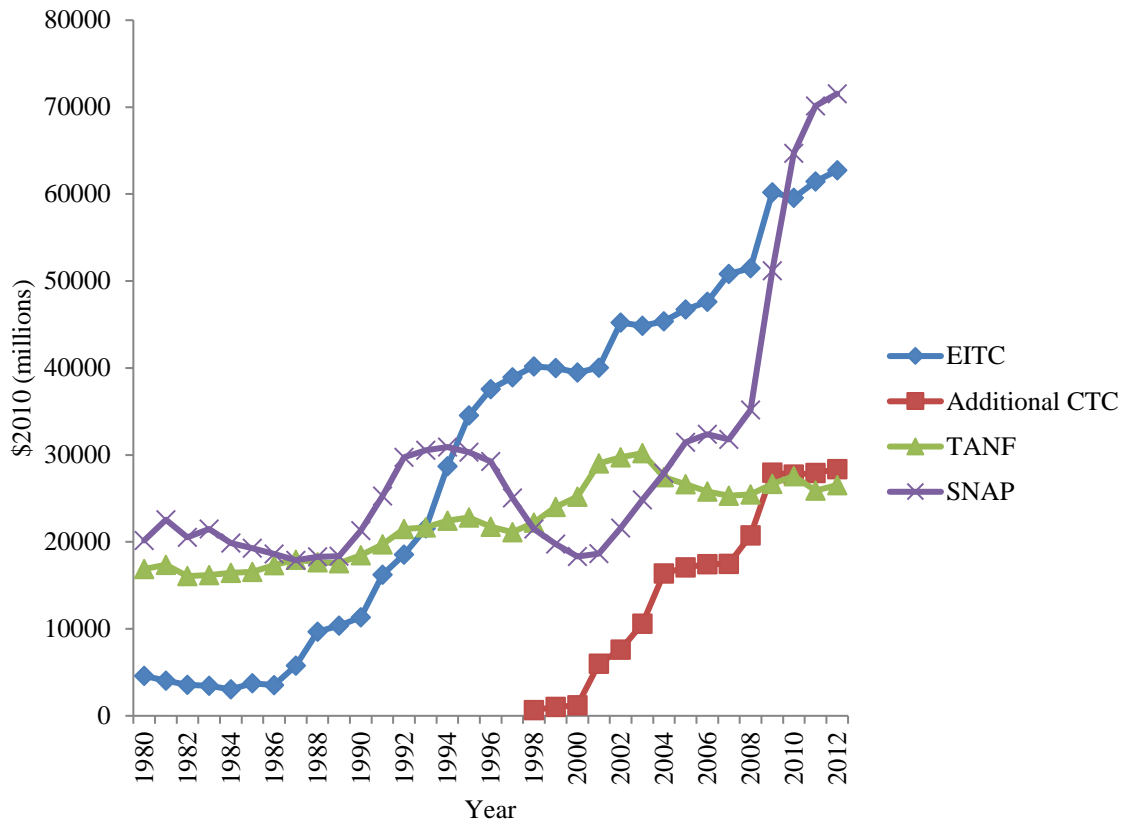
Source: Authors' calculations based on parameter estimates in Appendix Table 6. Simulations hold identified variables fixed and allow others to vary over time. In each case, the year effects are allowed to vary over time. Shares do not sum to 100% since some factors are omitted.

**APPENDIX FOR REVIEW
AND ONLINE PUBLICATION**

**The Changing Safety Net for Low Income Parents and Their
Children: Structural or Cyclical Changes in Income Support
Policy?**

Revised March 2017

Appendix Figure 1. Trends in Real Spending on Selected Safety Net Programs



Appendix Table 1: Number and Rate of Merges by 1st Year of CPS. CY 1980-2011

Year	# Merged CPS Observations	# CPS Observations	Merge Rate
1980	25,476	43,092	59.1%
1981	25,872	39,422	65.6%
1982	25,503	39,916	63.9%
1983	24,611	39,582	62.2%
1984			
1985	23,813	38,901	61.2%
1986	24,415	38,781	63.0%
1987	22,689	38,829	58.4%
1988	23,234	36,094	64.4%
1989	25,184	39,908	63.1%
1990	25,003	39,516	63.3%
1991	24,839	39,071	63.6%
1992	18,669	39,378	47.4%
1993	16,698	34,822	48.0%
1994			
1995	21,293	32,939	64.6%
1996	21,384	33,514	63.8%
1997	21,536	33,515	64.3%
1998	21,641	33,660	64.3%
1999	21,245	30,394	69.9%
2000	25,252	55,069	45.9%
2001	24,688	54,864	45.0%
2002	25,518	54,926	46.5%
2003	21,943	52,912	41.5%
2004	22,745	51,604	44.1%
2005	22,862	51,957	44.0%
2006	23,291	51,208	45.5%
2007	23,367	50,362	46.4%
2008	23,630	50,945	46.4%
2009	23,306	51,476	45.3%
2010	22,483	49,922	45.0%
2011	22,088	48,651	45.4%
Average # of Matches	43,058	23,190	55.3%

Appendix Table 2. Pre and Post Family Head Summary Statistics (weighted)

Variables	All Heads- Unmatched		All Heads- Matched	
	Mean	SD	Mean	SD
Ages 20-27	0.155	0.362	0.123	0.328
Ages 28-35	0.313	0.464	0.318	0.466
Ages 36-44	0.347	0.476	0.381	0.486
Ages 45-55	0.185	0.388	0.178	0.383
Less than High School	0.173	0.379	0.151	0.358
High School Diploma	0.327	0.469	0.332	0.471
Some College	0.263	0.440	0.253	0.435
College Graduate	0.237	0.425	0.264	0.441
Black	0.146	0.353	0.142	0.349
Other Race	0.056	0.229	0.055	0.229
Hispanic	0.177	0.381	0.133	0.340
Household Size	3.928	1.262	4.004	1.232
Number of Own Kids < age 18	1.879	0.967	1.933	0.965
Female Head	0.436	0.496	0.364	0.481
Married Head	0.703	0.457	0.757	0.429
Lives in Metro Area	0.791	0.406	0.783	0.412
Lives in Central City	0.266	0.442	0.244	0.430

Notes: Summary statistics from CPS ASEC for calendar years 1980-2012 and are based on year 1 of matched CPS, unless indicated otherwise. The unit of analysis for all summary statistics is the head of household. Each of the columns summarize all household heads. Statistics for unmatched sample are weighted using person level sampling weights. Statistics for matched sample are weighted using person level sampling weights adjusted for probability of year 2 selection.

Appendix Table 3. Family Head Summary Statistics

Variables	All Heads		Low Income		Low Education		Single Mother	
	Mean	SD	Mean	SD	Mean	SD	Mean	SD
SNAP Both Years	0.084	0.277	0.302	0.459	0.139	0.345	0.287	0.452
EITC/CTC Both Years	0.163	0.370	0.533	0.499	0.233	0.423	0.386	0.487
SNAP & EITC/CTC Both Years	0.037	0.189	0.137	0.344	0.058	0.234	0.109	0.311
Ages 20-27	0.123	0.329	0.244	0.429	0.173	0.378	0.216	0.411
Ages 28-35	0.318	0.466	0.360	0.480	0.335	0.472	0.324	0.468
Ages 36-44	0.381	0.486	0.287	0.452	0.340	0.474	0.330	0.470
Ages 45-55	0.178	0.382	0.109	0.312	0.153	0.360	0.130	0.337
Less than High School	0.152	0.359	0.351	0.477	0.313	0.464	0.219	0.413
High School Diploma	0.333	0.471	0.399	0.490	0.687	0.464	0.370	0.483
Some College	0.253	0.435	0.200	0.400	(omitted)	(omitted)	0.286	0.452
College Graduate	0.262	0.440	0.050	0.218	(omitted)	(omitted)	0.126	0.331
Black	0.143	0.350	0.273	0.445	0.174	0.379	0.370	0.483
Other Race	0.055	0.229	0.055	0.227	0.041	0.199	0.041	0.198
Hispanic	0.134	0.340	0.250	0.433	0.195	0.396	0.155	0.362
Household Size	4.002	1.233	4.135	1.548	4.074	1.330	3.308	1.296
Number of Own Kids < age 18	1.933	0.965	2.270	1.169	1.991	1.025	1.848	0.999
Female Head	0.366	0.482	0.586	0.492	0.380	0.485	1.000	0.000
Married Head	0.756	0.430	0.486	0.500	0.704	0.457	(omitted)	(omitted)
Lives in Metro Area	0.784	0.412	0.735	0.441	0.734	0.442	0.822	0.382
Lives in Central City	0.244	0.430	0.340	0.474	0.261	0.439	0.378	0.485
2-Year Real Average State Median Wage	14.497	2.142	14.128	2.094	14.175	2.131	14.494	2.131
Near Poverty Both Years	0.263	0.440	1.000	0.000	0.407	0.491	0.606	0.489
Near Poverty Year 1 Out of Near Poverty Year 2	0.079	0.269	(omitted)	(omitted)	0.093	0.290	0.083	0.275
State Share Not in Labor Force	0.118	0.032	0.123	0.033	0.120	0.033	0.120	0.032
Full Year Worker Both Years	0.599	0.490	0.302	0.459	0.521	0.500	0.381	0.486
Part Year Worker Both Years	0.105	0.307	0.177	0.382	0.118	0.323	0.151	0.358
Not in Labor Force Both Years	0.085	0.279	0.216	0.412	0.118	0.323	0.182	0.386
Full Year Worker Year 1 Part Year Worker Year 2	0.070	0.254	0.076	0.265	0.076	0.266	0.074	0.262
Full Year Worker Year 1 NILF Year 2	0.008	0.089	0.012	0.110	0.010	0.097	0.012	0.111

Appendix Table 3 Continued

Variables	All Heads		Low Income		Low Education		Single Mother	
	Mean	SD	Mean	SD	Mean	SD	Mean	SD
Part Year Work Year 1 Full Year Work Year 2	0.076	0.266	0.091	0.288	0.084	0.278	0.091	0.287
Part Year Work Year 1 NILF Year 2	0.025	0.157	0.059	0.236	0.033	0.178	0.053	0.224
NILF Year 1 Full Year Work Year 2	0.007	0.084	0.012	0.110	0.009	0.095	0.012	0.109
NILF Year 1 Part Year Work Year 2	0.021	0.142	0.049	0.216	0.026	0.160	0.043	0.204
State Unemployment Rate	0.063	0.021	0.066	0.022	0.065	0.022	0.064	0.021
State Minimum Wage	6.523	0.678	6.540	0.686	6.501	0.668	6.528	0.681
EITC Subsidy Rate	0.264	0.126	0.266	0.130	0.248	0.128	0.271	0.123
Any Welfare Reform Waiver	0.055	0.211	0.054	0.210	0.050	0.202	0.054	0.210
TANF Implementation	0.439	0.491	0.432	0.490	0.382	0.481	0.468	0.494
Max SNAP Benefit (\$100s)	4.746	0.863	4.637	0.967	4.695	0.861	4.095	1.032
Implementation of EBT Card	0.370	0.470	0.369	0.471	0.318	0.454	0.402	0.478
Broad-Based Eligibility	0.112	0.308	0.125	0.323	0.094	0.285	0.130	0.329
Call Centers	0.140	0.347	0.146	0.354	0.116	0.320	0.156	0.363
Combined Applications	0.094	0.289	0.106	0.304	0.081	0.270	0.115	0.315
Initiate by Phone	0.060	0.237	0.069	0.254	0.048	0.214	0.071	0.258
Short Certification	0.431	0.495	0.418	0.493	0.384	0.486	0.456	0.498
Noncitizens SNAP-eligible	0.122	0.323	0.120	0.322	0.108	0.308	0.121	0.323
Requires Fingerprinting	0.138	0.345	0.158	0.365	0.129	0.335	0.150	0.357
Compulsory Disqualification	0.136	0.334	0.133	0.331	0.115	0.310	0.148	0.347
Online Application	0.099	0.299	0.105	0.307	0.081	0.273	0.110	0.313
Simplified Reporting	0.212	0.403	0.218	0.408	0.175	0.375	0.244	0.425
Vehicle Assets Excludable	0.167	0.368	0.176	0.376	0.137	0.339	0.190	0.387
Outreach (\$100mill)	0.295	0.980	0.328	1.063	0.254	0.910	0.335	1.035
Governor is Democrat	0.469	0.499	0.469	0.499	0.472	0.499	0.474	0.499
State Has Refundable EITC	0.121	0.326	0.111	0.314	0.097	0.295	0.134	0.341

Notes: Summary statistics span 1981-2012 and are based on year 1 of matched CPS, unless indicated otherwise. The unit of analysis for all summary statistics is the head of household. Each of the columns summarize household heads falling within one of four categories: All, Low Income, Low Education, Single Mother. Low income household heads have earnings at or below 2 times the federal poverty threshold. All dollar figures are in 2010 dollars, using the personal consumption expenditures deflator. NILF denotes individual family heads that are not in the labor force for a particular year. Statistics are weighted using person level sampling weights adjusted for probability of year 2 selection.

Appendix Table 4. Two-Year SNAP and EITC/CTC Transition Rates and Relative Frequency

Transition Rates, All Years				
	None Year 2	EITC/CTC Year 2	SNAP Year 2	EITC/CTC-SNAP Year 2
None Year 1	91.4%	7.0%	0.8%	0.8%
EITC Year 1	35.3	54.9	2.2	7.6
SNAP Year 1	19.8	8.3	52.0	19.9
EITC/CTC-SNAP Year 1	11.5	23.4	13.6	51.4
Transition Rates, 1980-1989				
None Year 1	93.4%	4.7%	1.1%	0.8%
EITC/CTC Year 1	43.2	45.9	3.3	7.7
SNAP Year 1	23.0	5.9	54.0	17.1
EITC/CTC-SNAP Year 1	16.2	17.3	19.6	46.9
Transition Rates, 1990-1999				
None Year 1	91.7%	7.0%	0.6%	0.7%
EITC/CTC Year 1	35.5	55.8	2.1	6.7
SNAP Year 1	15.0	8.7	55.3	21.1
EITC/CTC-SNAP Year 1	10.7	24.9	11.9	52.5
Transition Rates, 2000-2012				
None Year 1	89.2%	9.3%	0.7%	0.8%
EITC/CTC Year 1	32.4	57.6	1.8	8.2
SNAP Year 1	19.6	11.7	45.4	23.2
EITC/CTC-SNAP Year 1	8.9	26.4	11.0	53.6

Note: Rows for transition rates represent share of year 1 survey respondents that fall into one of four categories in year 2: None (no programs), EITC/CTC alone, SNAP alone, or EITC/CTC and SNAP. Transition rate rows add up to 100 percent.

Appendix Table 5. Linear Probability Estimates of Biennial SNAP Participation during 2000s

VARIABLES	All Families	Low-Income Families	Low-Education Families	Single Mother Families
Family Level				
Ages 28-35	-0.0797*** (0.006)	-0.0795*** (0.009)	-0.0887*** (0.010)	-0.1087*** (0.015)
Ages 36-44	-0.1025*** (0.008)	-0.0951*** (0.011)	-0.1116*** (0.011)	-0.1543*** (0.016)
Ages 45-55	-0.0949*** (0.008)	-0.0884*** (0.012)	-0.0961*** (0.011)	-0.1535*** (0.019)
High School Diploma	-0.0886*** (0.007)	-0.0780*** (0.013)	-0.0867*** (0.007)	-0.1588*** (0.012)
Some College	-0.1207*** (0.009)	-0.1204*** (0.017)		-0.2227*** (0.015)
College Graduate	-0.1389*** (0.009)	-0.2006*** (0.020)		-0.3092*** (0.016)
Black	0.0631*** (0.006)	0.0917*** (0.016)	0.0863*** (0.014)	0.0910*** (0.013)
Other Race	0.0212*** (0.006)	0.0191 (0.018)	0.0119 (0.011)	0.0306 (0.022)
Hispanic	0.0001 (0.009)	-0.0335* (0.019)	0.0013 (0.012)	0.0163 (0.016)
Household Size	-0.0257*** (0.003)	-0.0428*** (0.006)	-0.0307*** (0.005)	-0.0467*** (0.007)
Number of Own Kids < Age 18	0.0582*** (0.003)	0.0761*** (0.006)	0.0739*** (0.005)	0.0996*** (0.008)
Female Head	0.0268*** (0.003)	0.0556*** (0.011)	0.0498*** (0.006)	
Married Head	-0.1363*** (0.008)	-0.1564*** (0.012)	-0.1662*** (0.010)	
Lives in Metro Area	-0.0134*** (0.005)	-0.0151 (0.015)	-0.0160* (0.009)	-0.0514*** (0.017)
Lives in Central City	0.0164*** (0.005)	0.0142 (0.018)	0.0186* (0.010)	0.0265** (0.012)
State/Federal Level				
State Unemployment Rate (UR)	0.4901 (0.420)	1.8687 (1.318)	0.9431 (0.790)	1.3442 (1.430)
1 Year Lagged State UR	-0.0666 (0.529)	-0.5432 (1.758)	0.3440 (1.040)	-0.6942 (1.755)
2 year Lagged State UR	1.0035*** (0.321)	3.0688*** (1.130)	1.0327 (0.642)	3.4367*** (1.111)
State % Full Year Worker	-0.0298 (0.087)	0.1640 (0.319)	0.0398 (0.151)	-0.1096 (0.274)
State % Part Year Worker	-0.0832 (0.095)	-0.1533 (0.367)	-0.1971 (0.160)	-0.5374 (0.325)
State % Not in Labor Force	-0.0201 (0.099)	-0.2386 (0.283)	-0.0538 (0.193)	-0.4321* (0.247)
State Median Wage	-0.0004 (0.002)	0.0053 (0.007)	0.0009 (0.004)	0.0027 (0.006)
State Minimum Wage	-0.0021 (0.004)	-0.0065 (0.016)	-0.0137 (0.009)	0.0001 (0.016)
EITC Subsidy Rate	-0.4355*** (0.066)	-0.2673 (0.237)	-0.2212* (0.115)	-0.1127 (0.265)

State Has Refundable EITC	-0.0005 (0.006)	-0.0089 (0.023)	-0.0114 (0.013)	0.0113 (0.020)
Any Welfare Reform Waiver				
TANF Implementation				
Max SNAP Benefit (\$100s)	0.0318*** (0.005)	0.0395*** (0.008)	0.0276*** (0.008)	0.0312*** (0.008)
Implementation of EBT Card	-0.0003 (0.006)	0.0096 (0.022)	-0.0020 (0.014)	0.0116 (0.022)
Broad-Based Eligibility	-0.0033 (0.005)	-0.0258 (0.016)	-0.0136 (0.011)	0.0084 (0.023)
Short Certification	-0.0013 (0.004)	-0.0061 (0.015)	-0.0102 (0.010)	-0.0097 (0.016)
Requires Fingerprinting	0.0105 (0.007)	0.0291* (0.015)	0.0025 (0.010)	0.0132 (0.024)
Compulsory Disqualification	0.0030 (0.007)	0.0196 (0.018)	0.0113 (0.013)	-0.0022 (0.021)
Simplified Reporting	0.0126** (0.005)	0.0417** (0.020)	0.0300*** (0.009)	0.0184 (0.021)
Vehicle Assets Excludable	-0.0042 (0.006)	0.0021 (0.015)	-0.0045 (0.010)	-0.0190 (0.017)
Outreach (\$100 millions)	-0.0019 (0.002)	-0.0060 (0.006)	-0.0039 (0.003)	-0.0105* (0.005)
Noncitizens SNAP-eligible	-0.0132 (0.010)	-0.0836*** (0.028)	-0.0322* (0.019)	0.0000 (0.023)
Governor is Democrat	0.0019 (0.003)	0.0128 (0.012)	0.0050 (0.008)	0.0082 (0.012)
Observations	74,119	15,330	27,859	12,422
R-squared	0.180	0.145	0.196	0.193

Standard errors in parenthesis control for heteroskedasticity and within-state autocorrelation. All models control for fixed state and time effects. *** p<0.01, ** p<0.05, * p<0.1.

Appendix Table 6. Linear Probability Estimates of Biennial Joint SNAP and EITC/CTC Participation during 2000s

VARIABLES	All Families	Low-Income Families	Low-Education Families	Single Mother Families
Family Level				
Ages 28-35	-0.0525*** (0.006)	-0.0566*** (0.009)	-0.0565*** (0.009)	-0.0586*** (0.016)
Ages 36-44	-0.0665*** (0.008)	-0.0683*** (0.015)	-0.0686*** (0.011)	-0.0792*** (0.018)
Ages 45-55	-0.0653*** (0.008)	-0.0869*** (0.014)	-0.0663*** (0.010)	-0.0931*** (0.019)
High School Diploma	-0.0418*** (0.006)	-0.0282** (0.012)	-0.0415*** (0.006)	-0.0536*** (0.014)
Some College	-0.0572*** (0.007)	-0.0322* (0.018)		-0.0713*** (0.017)
College Graduate	-0.0712*** (0.006)	-0.0893*** (0.018)		-0.1187*** (0.015)
Black	0.0285*** (0.006)	0.0348** (0.015)	0.0395*** (0.010)	0.0372*** (0.012)
Other Race	0.0088* (0.005)	-0.0087 (0.018)	-0.0033 (0.009)	-0.0017 (0.019)
Hispanic	0.0040 (0.008)	-0.0208 (0.016)	0.0060 (0.011)	0.0043 (0.014)
Household Size	-0.0129*** (0.002)	-0.0209*** (0.004)	-0.0156*** (0.003)	-0.0241*** (0.007)
Number of Own Kids < Age 18	0.0379*** (0.003)	0.0479*** (0.005)	0.0494*** (0.003)	0.0626*** (0.007)
Female Head	0.0134*** (0.002)	0.0253** (0.011)	0.0234*** (0.005)	
Married Head	-0.0614*** (0.008)	-0.0459*** (0.011)	-0.0616*** (0.010)	
Lives in Metro Area	-0.0067* (0.004)	0.0033 (0.012)	-0.0061 (0.007)	-0.0336** (0.014)
Lives in Central City	0.0054 (0.004)	-0.0034 (0.014)	0.0061 (0.007)	0.0052 (0.010)
State/Federal Level				
State Unemployment Rate (UR)	0.4696* (0.240)	1.6082* (0.918)	0.9246** (0.447)	1.1501 (0.879)
1 Year Lagged State UR	-0.2774 (0.350)	-1.0285 (1.253)	-0.1605 (0.618)	-1.7411 (1.241)
2 year Lagged State UR	0.8600*** (0.295)	2.8148*** (1.026)	1.0769** (0.442)	3.8800*** (1.209)
State % Full Year Worker	-0.0697 (0.064)	-0.0572 (0.234)	-0.0397 (0.122)	-0.3643** (0.181)
State % Part Year Worker	-0.0713 (0.080)	-0.1943 (0.321)	-0.0870 (0.130)	-0.7447*** (0.250)
State % Not in Labor Force	-0.0654 (0.090)	-0.3738 (0.297)	-0.1991 (0.199)	-0.4463 (0.296)
State Median Wage	0.0004 (0.001)	0.0034 (0.006)	-0.0006 (0.003)	0.0075 (0.005)
State Minimum Wage	0.0052 (0.004)	0.0231 (0.015)	0.0039 (0.006)	0.0302** (0.014)
EITC Subsidy Rate	-0.3237***	-0.4462**	-0.2761**	-0.6217***

	(0.061)	(0.186)	(0.106)	(0.207)
State Has Refundable EITC	0.0007	-0.0014	-0.0059	0.0154
	(0.005)	(0.020)	(0.010)	(0.017)
Any Welfare Reform Waiver				
TANF Implementation				
Max SNAP Benefit (\$100s)	0.0141***	0.0247***	0.0100	0.0236**
	(0.004)	(0.007)	(0.006)	(0.009)
Implementation of EBT Card	-0.0067	-0.0184	-0.0200	-0.0165
	(0.006)	(0.019)	(0.013)	(0.025)
Broad-Based Eligibility	0.0000	-0.0129	-0.0110	0.0003
	(0.005)	(0.015)	(0.009)	(0.022)
Short Certification	0.0006	0.0017	-0.0035	0.0001
	(0.003)	(0.012)	(0.009)	(0.012)
Requires Fingerprinting	0.0159***	0.0465***	0.0236***	0.0312
	(0.005)	(0.012)	(0.006)	(0.029)
Compulsory Disqualification	0.0008	0.0145	0.0079	-0.0033
	(0.006)	(0.018)	(0.011)	(0.020)
Simplified Reporting	0.0065*	0.0199	0.0142**	0.0122
	(0.004)	(0.013)	(0.006)	(0.016)
Vehicle Assets Excludable	0.0032	0.0239*	0.0089	0.0208
	(0.004)	(0.013)	(0.009)	(0.017)
Outreach (\$100 millions)	0.0003	0.0021	0.0022	0.0065
	(0.002)	(0.006)	(0.003)	(0.005)
Noncitizens SNAP-eligible	-0.0078	-0.0378*	-0.0124	0.0335*
	(0.007)	(0.022)	(0.011)	(0.019)
Governor is Democrat	0.0014	0.0079	0.0024	-0.0013
	(0.003)	(0.009)	(0.006)	(0.011)
Observations	74,119	15,330	27,859	12,422
R-squared	0.089	0.066	0.089	0.087

Standard errors in parenthesis control for heteroskedasticity and within-state autocorrelation. All models control for fixed state and time effects. *** p<0.01, ** p<0.05, * p<0.1.

Appendix Table 7. Counterfactual Simulations of Changes in Biennial Participation in SNAP from 2000-2012, using 1980-2012 regressions with Flexible Head Status

All Families						
Actual Change (%)	State Labor Market Fixed at 2000 Levels		Policies Fixed at 2000 Levels		Demographics Fixed at 2000 Levels	
	Predicted Change	Share	Predicted Change	Share	Predicted Change	Share
104	36	70	34	72	90	15
Low-Income Families						
Actual Change (%)	State Labor Market Fixed at 2000 Levels		Policies Fixed at 2000 Levels		Demographics Fixed at 2000 Levels	
	Predicted Change	Share	Predicted Change	Share	Predicted Change	Share
56	7	89	18	69	54	8
Low-Education Families						
Actual Change (%)	State Labor Market Fixed at 2000 Levels		Policies Fixed at 2000 Levels		Demographics Fixed at 2000 Levels	
	Predicted Change	Share	Predicted Change	Share	Predicted Change	Share
110	55	54	51	57	52	36
Single-Mother Families						
Actual Change (%)	State Labor Market Fixed at 2000 Levels		Policies Fixed at 2000 Levels		Demographics Fixed at 2000 Levels	
	Predicted Change	Share	Predicted Change	Share	Predicted Change	Share
38	-23	155	8	79	53	-19

Source: Authors' calculations based on parameter estimates of two year SNAP participation allowing for head of family status to change (not shown). Simulations hold identified variables fixed and allow others to vary over time. In each case, the year effects are allowed to vary over time. Shares do not sum to 100% since some factors are omitted.

Appendix Table 8. Counterfactual Simulations of Changes in Biennial Participation in SNAP and EITC/CTC from 2000-2012, using 1980-2012 regressions with Flexible Head Status

All Families						
Actual Change (%)	State Labor Market Fixed at 2000 Levels		Policies Fixed at 2000 Levels		Demographics Fixed at 2000 Levels	
	Predicted Change	Share	Predicted Change	Share	Predicted Change	Share
103	89	23	5	95	90	9
Low-Income Families						
Actual Change (%)	State Labor Market Fixed at 2000 Levels		Policies Fixed at 2000 Levels		Demographics Fixed at 2000 Levels	
	Predicted Change	Share	Predicted Change	Share	Predicted Change	Share
54	33	42	-29	155	41	24
Low-Education Families						
Actual Change (%)	State Labor Market Fixed at 2000 Levels		Policies Fixed at 2000 Levels		Demographics Fixed at 2000 Levels	
	Predicted Change	Share	Predicted Change	Share	Predicted Change	Share
106	63	43	6	94	52	39
Single-Mother Families						
Actual Change (%)	State Labor Market Fixed at 2000 Levels		Policies Fixed at 2000 Levels		Demographics Fixed at 2000 Levels	
	Predicted Change	Share	Predicted Change	Share	Predicted Change	Share
38	33	21	-67	274	48	-12

Source: Authors' calculations based on parameter estimates of two year SNAP and EITC/CTC participation allowing for head of family status to change (not shown). Simulations hold identified variables fixed and allow others to vary over time. In each case, the year effects are allowed to vary over time. Shares do not sum to 100% since some factors are omitted.

Appendix Table 9. Counterfactual Simulations of Changes in Biennial Participation in SNAP from 2000-2012, using 2000-2012 regressions (with Native Born)

All Families						
Actual Change (%)	State Labor Market Fixed at 2000 Levels		Policies Fixed at 2000 Levels		Demographics Fixed at 2000 Levels	
	Predicted Change	Share	Predicted Change	Share	Predicted Change	Share
104	-14	111	53	55	101	-.3
Low-Income Families						
Actual Change (%)	State Labor Market Fixed at 2000 Levels		Policies Fixed at 2000 Levels		Demographics Fixed at 2000 Levels	
	Predicted Change	Share	Predicted Change	Share	Predicted Change	Share
56	-9	115	42	31	64	-7
Low-Education Families						
Actual Change (%)	State Labor Market Fixed at 2000 Levels		Policies Fixed at 2000 Levels		Demographics Fixed at 2000 Levels	
	Predicted Change	Share	Predicted Change	Share	Predicted Change	Share
110	34	76	94	19	65	23
Single-Mother Families						
Actual Change (%)	State Labor Market Fixed at 2000 Levels		Policies Fixed at 2000 Levels		Demographics Fixed at 2000 Levels	
	Predicted Change	Share	Predicted Change	Share	Predicted Change	Share
38	-52	250	18	52	53	-23

Source: Authors' calculations based on parameter estimates with controls for native born status (not shown). Simulations hold identified variables fixed and allow others to vary over time. In each case, the year effects are allowed to vary over time. Shares do not sum to 100% since some factors are omitted.

Appendix Table 10. Counterfactual Simulations of Changes in Biennial Participation in SNAP and EITC/CTC from 2000-2012, using 2000-2012 regressions (with Native Born)

All Families						
Actual Change (%)	State Labor Market Fixed at 2000 Levels		Policies Fixed at 2000 Levels		Demographics Fixed at 2000 Levels	
	Predicted Change	Share	Predicted Change	Share	Predicted Change	Share
104	-79	163	12	90	84	14
Low-Income Families						
Actual Change (%)	State Labor Market Fixed at 2000 Levels		Policies Fixed at 2000 Levels		Demographics Fixed at 2000 Levels	
	Predicted Change	Share	Predicted Change	Share	Predicted Change	Share
54	-56	195	-5	108	45	19
Low-Education Families						
Actual Change (%)	State Labor Market Fixed at 2000 Levels		Policies Fixed at 2000 Levels		Demographics Fixed at 2000 Levels	
	Predicted Change	Share	Predicted Change	Share	Predicted Change	Share
107	-63	151	52	53	46	44
Single-Mother Families						
Actual Change (%)	State Labor Market Fixed at 2000 Levels		Policies Fixed at 2000 Levels		Demographics Fixed at 2000 Levels	
	Predicted Change	Share	Predicted Change	Share	Predicted Change	Share
38	-108	344	-52	233	40	5

Source: Authors' calculations based on parameter estimates with controls for native born status (not shown). Simulations hold identified variables fixed and allow others to vary over time. In each case, the year effects are allowed to vary over time. Shares do not sum to 100% since some factors are omitted.

Appendix Table 11. Linear Probability Estimates of Biennial SNAP Eligibility, All Heads

VARIABLES	Actual	Simulated
Family Level		
Ages 28-35	-0.0860*** (0.004)	-0.1070*** (0.004)
Ages 36-44	-0.1092*** (0.006)	-0.1416*** (0.005)
Ages 45-55	-0.0962*** (0.006)	-0.1197*** (0.005)
High School Diploma	-0.1179*** (0.005)	-0.1734*** (0.007)
Some College	-0.1434*** (0.006)	-0.2262*** (0.008)
College Graduate	-0.1527*** (0.006)	-0.2403*** (0.007)
Black	0.0831*** (0.007)	0.0976*** (0.008)
Other Race	0.0317*** (0.007)	0.0570*** (0.005)
Hispanic	0.0077 (0.016)	0.0672*** (0.012)
Household Size	-0.0219*** (0.002)	-0.0200*** (0.003)
Number of Own Kids < Age 18	0.0557*** (0.002)	0.0866*** (0.003)
Female Head	0.0484*** (0.003)	0.0617*** (0.003)
Married Head	-0.1539*** (0.007)	-0.2024*** (0.007)
Lives in Metro Area	-0.0141*** (0.003)	-0.0349*** (0.004)
Lives in Central City	0.0212*** (0.005)	0.0280*** (0.006)
State/Federal Level		
State Unemployment Rate (UR)	0.1703 (0.182)	-0.0681 (0.135)
1 Year Lagged State UR	-0.0757 (0.220)	0.2602 (0.228)
2 year Lagged State UR	0.5362*** (0.122)	0.3015** (0.140)
State % Full Year Worker	-0.0316 (0.036)	-0.1082** (0.041)
State % Part Year Worker	0.0620 (0.051)	0.1108** (0.046)
State % Not in Labor Force	0.2015*** (0.065)	0.2179*** (0.073)
State Median Wage	-0.0007 (0.001)	-0.0020* (0.001)
State Minimum Wage	-0.0029 (0.002)	-0.0032 (0.003)
EITC Subsidy Rate	-0.4042*** (0.062)	-0.3798*** (0.067)
State Has Refundable EITC	-0.0044	0.0041

	(0.005)	(0.004)
Any Welfare Reform Waiver	-0.0052	0.0013
	(0.005)	(0.007)
TANF Implementation	-0.0268***	-0.0004
	(0.008)	(0.012)
Max SNAP Benefit (\$100s)	0.0286***	0.0114**
	(0.003)	(0.005)
Implementation of EBT Card	0.0006	0.0005
	(0.004)	(0.004)
Broad-Based Eligibility	0.0026	-0.0008
	(0.005)	(0.004)
Short Certification	-0.0009	0.0016
	(0.004)	(0.005)
Requires Fingerprinting	-0.0002	-0.0007
	(0.005)	(0.003)
Compulsory Disqualification	0.0036	0.0021
	(0.004)	(0.003)
Simplified Reporting	0.0128**	-0.0024
	(0.006)	(0.005)
Vehicle Assets Excludable	0.0024	0.0058
	(0.005)	(0.005)
Outreach (\$100 millions)	-0.0033***	-0.0023***
	(0.001)	(0.001)
Noncitizens SNAP-eligible	-0.0005	-0.0069
	(0.005)	(0.008)
Governor is Democrat	0.0055***	0.0019
	(0.002)	(0.002)
Observations	176,072	176,072
R-squared	0.229	0.303

Standard errors in parenthesis control for heteroskedasticity and within-state autocorrelation. All models control for fixed state and time effects. *** p<0.01, ** p<0.05, * p<0.1.

Appendix Table 12. Linear Probability Estimates of Biennial Joint SNAP and EITC/CTC Eligibility, All Heads

VARIABLES	Actual	Simulated
Family Level		
Ages 28-35	-0.0385*** (0.005)	-0.0498*** (0.005)
Ages 36-44	-0.0500*** (0.006)	-0.0722*** (0.006)
Ages 45-55	-0.0482*** (0.005)	-0.0672*** (0.005)
High School Diploma	-0.0405*** (0.004)	-0.0797*** (0.007)
Some College	-0.0498*** (0.004)	-0.1078*** (0.008)
College Graduate	-0.0594*** (0.004)	-0.1214*** (0.007)
Black	0.0295*** (0.004)	0.0407*** (0.007)
Other Race	0.0112*** (0.004)	0.0234*** (0.007)
Hispanic	0.0053 (0.008)	0.0569*** (0.010)
Household Size	-0.0041*** (0.001)	-0.0028 (0.002)
Number of Own Kids < Age 18	0.0196*** (0.002)	0.0338*** (0.003)
Female Head	0.0134*** (0.001)	0.0197*** (0.002)
Married Head	-0.0554*** (0.004)	-0.0792*** (0.006)
Lives in Metro Area	-0.0097*** (0.003)	-0.0242*** (0.003)
Lives in Central City	0.0016 (0.003)	0.0047 (0.004)
State/Federal Level		
State Unemployment Rate (UR)	-0.0235 (0.127)	-0.1103 (0.109)
1 Year Lagged State UR	-0.1321 (0.159)	-0.0349 (0.216)
2 year Lagged State UR	0.3515*** (0.100)	0.3836*** (0.137)
State % Full Year Worker	-0.0477 (0.030)	-0.0571 (0.044)
State % Part Year Worker	0.0441 (0.043)	0.1424*** (0.042)
State % Not in Labor Force	-0.1143** (0.055)	-0.1208 (0.073)
State Median Wage	-0.0035*** (0.001)	-0.0058*** (0.001)
State Minimum Wage	0.0005 (0.002)	-0.0001 (0.002)
EITC Subsidy Rate	0.0066 (0.051)	0.2157*** (0.066)

State Has Refundable EITC	0.0001 (0.003)	0.0049 (0.004)
Any Welfare Reform Waiver	0.0009 (0.005)	0.0049 (0.006)
TANF Implementation	-0.0112 (0.008)	0.0097 (0.012)
Max SNAP Benefit (\$100s)	0.0068*** (0.002)	-0.0003 (0.002)
Implementation of EBT Card	-0.0020 (0.003)	-0.0018 (0.004)
Broad-Based Eligibility	0.0032 (0.004)	0.0005 (0.004)
Short Certification	-0.0006 (0.003)	-0.0011 (0.005)
Requires Fingerprinting	0.0033 (0.004)	0.0013 (0.005)
Compulsory Disqualification	0.0018 (0.004)	0.0022 (0.003)
Simplified Reporting	0.0095** (0.004)	-0.0033 (0.005)
Vehicle Assets Excludable	0.0053 (0.004)	0.0040 (0.004)
Outreach (\$100 millions)	0.0005 (0.001)	-0.0000 (0.002)
Noncitizens SNAP-eligible	-0.0058 (0.004)	-0.0005 (0.005)
Governor is Democrat	0.0037*** (0.001)	0.0000 (0.002)
Observations	176,072	176,072
R-squared	0.076	0.119

Standard errors in parenthesis control for heteroskedasticity and within-state autocorrelation. All models control for fixed state and time effects. *** p<0.01, ** p<0.05, * p<0.1.

Appendix Table 13. Counterfactual Simulations of Changes in Biennial SNAP or SNAP and EITC/CTC Eligibility from 2000-2012, using 1980-2012 regressions

All Families - SNAP Eligibility						
Actual Change (%)	State Labor Market Fixed at 2000 Levels		Policies Fixed at 2000 Levels		Demographics Fixed at 2000 Levels	
	Predicted Change	Share	Predicted Change	Share	Predicted Change	Share
58	29	54	69	-10	54	8

All Families - SNAP and EITC/CTC Eligibility						
Actual Change (%)	State Labor Market Fixed at 2000 Levels		Policies Fixed at 2000 Levels		Demographics Fixed at 2000 Levels	
	Predicted Change	Share	Predicted Change	Share	Predicted Change	Share
38	19	52	27	27	27	28

Source: Authors' calculations based on eligibility parameter estimates in Appendix Tables 11-12. Simulations hold identified variables fixed and allow others to vary over time. In each case, the year effects are allowed to vary over time. Shares do not sum to 100% since some factors are omitted.

Appendix Table 14. Counterfactual Simulations of Changes in Biennial Participation in SNAP from 2000-2012, using 1980-2012 regressions with Meyer-Mok-Sullivan Adjustments

All Families						
Actual Change (%)	State Labor Market Fixed at 2000 Levels		Policies Fixed at 2000 Levels		Demographics Fixed at 2000 Levels	
	Predicted Change	Share	Predicted Change	Share	Predicted Change	Share
139	99	39	79	50	139	1
Low-Income Families						
Actual Change (%)	State Labor Market Fixed at 2000 Levels		Policies Fixed at 2000 Levels		Demographics Fixed at 2000 Levels	
	Predicted Change	Share	Predicted Change	Share	Predicted Change	Share
82	40	54	38	56	83	3
Low-Education Families						
Actual Change (%)	State Labor Market Fixed at 2000 Levels		Policies Fixed at 2000 Levels		Demographics Fixed at 2000 Levels	
	Predicted Change	Share	Predicted Change	Share	Predicted Change	Share
146	106	32	87	43	86	20
Single-Mother Families						
Actual Change (%)	State Labor Market Fixed at 2000 Levels		Policies Fixed at 2000 Levels		Demographics Fixed at 2000 Levels	
	Predicted Change	Share	Predicted Change	Share	Predicted Change	Share
61	14	79	30	54	84	-17

Source: Authors' calculations based on parameter estimates with adjustments for reported SNAP receipt from Meyer, Mok, and Sullivan (2015). Simulations hold identified variables fixed and allow others to vary over time. In each case, the year effects are allowed to vary over time. Shares do not sum to 100% since some factors are omitted.

Appendix Table 15. Two-Year SNAP, EITC/CTC, and TANF Transition Rates

Transition Rates, All Years									
	<i>Year 2</i>	None	EITC/CTC	SNAP	TANF	EITC/CTC-SNAP	EITC/CTC-TANF	SNAP-TANF	EITC/CTC-SNAP-TANF
<i>Year 1</i>									
None		91.3	6.9	0.5	0.2	0.6	0.1	0.2	0.2
EITC/CTC		35.3	54.5	1.2	0.2	5.9	0.5	0.8	1.4
SNAP		31.9	11.2	28.0	1.0	16.3	0.6	7.7	3.2
TANF		48.8	11.9	3.5	8.7	3.1	3.0	15.4	5.5
EITC/CTC-SNAP		12.6	26.4	7.1	0.2	44.1	0.7	2.4	6.5
EITC/CTC-TANF		22.5	35.7	3.0	3.6	8.2	8.7	5.9	12.5
SNAP-TANF		8.2	4.6	6.4	2.5	4.0	1.3	56.9	16.2
EITC/CTC-SNAP-TANF		8.0	14.7	4.1	1.2	17.4	2.2	17.0	35.5
Transition Rates, 1980-1989									
<i>Year 1</i>									
None		93.4	4.6	0.7	0.3	0.5	0.1	0.2	0.3
EITC/CTC		43.4	45.6	1.5	0.4	4.8	0.6	1.4	2.2
SNAP		44.8	8.1	22.5	1.2	12.5	0.6	6.9	3.4
TANF		46.7	7.6	2.1	10.2	3.4	3.1	20.1	6.8
EITC/CTC-SNAP		21.0	20.4	8.5	0.7	37.7	0.9	3.5	7.4
EITC/CTC-TANF		24.3	23.8	1.9	3.3	7.9	14.0	8.4	16.4
SNAP-TANF		8.0	3.0	3.6	3.8	1.7	1.5	62.4	16.1
EITC/CTC-SNAP-TANF		9.8	10.8	3.0	1.2	9.2	2.5	23.9	39.5
Transition Rates, 1990-1999									
<i>Year 1</i>									
None		91.5	6.8	0.3	0.3	0.5	0.1	0.2	0.2
EITC/CTC		35.4	55.3	0.7	0.2	4.7	0.7	1.1	1.8
SNAP		29.5	13.6	23.1	1.3	14.2	0.7	12.9	4.7
TANF		49.2	13.6	3.7	9.9	2.1	4.2	12.6	4.7
EITC/CTC-SNAP		12.8	29.2	5.5	0.0	40.8	0.7	2.0	9.0
EITC/CTC-TANF		23.1	40.9	4.8	3.8	4.3	5.9	7.0	10.2
SNAP-TANF		7.6	5.3	5.6	1.1	4.9	1.1	57.2	17.1
EITC/CTC-SNAP-TANF		6.7	16.5	3.0	1.5	17.9	2.3	14.3	37.8
Transition Rates, 2000-2012									
<i>Year 1</i>									
None		89.1	9.2	0.5	0.1	0.7	0.0	0.1	0.1
EITC/CTC		32.3	57.3	1.4	0.2	7.0	0.4	0.4	1.0
SNAP		22.8	12.7	34.7	0.7	20.2	0.5	6.0	2.4
TANF		53.5	20.1	6.9	3.8	3.8	1.3	7.5	3.1
EITC/CTC-SNAP		9.1	27.4	7.4	0.1	48.2	0.7	2.0	5.0
EITC/CTC-TANF		19.3	45.3	2.5	3.7	13.0	5.0	1.2	9.9

Appendix Table 15 Continued

	<i>Year 2</i>	None	EITC/CTC	SNAP	TANF	EITC/CTC-SNAP	EITC/CTC-TANF	SNAP-TANF	EITC/CTC-SNAP-TANF
SNAP-TANF		10.4	8.2	17.4	1.5	9.7	0.7	37.5	14.6
EITC/CTC-SNAP-TANF		7.1	18.2	7.4	0.8	30.0	1.4	9.8	25.4

Note: Rows reflect year 1 and columns reflect year 2. Rows for transition rates represent share of year 1 survey respondents that fall into one of eight categories in year 2: (1) None (no programs), (2) EITC/CTC alone, (3) SNAP alone, (4) AFDC/TANF alone, (5) EITC/CTC and SNAP, (6) EITC/CTC and AFDC/TANF, (7) SNAP and AFDC/TANF, or (8) EITC/CTC, SNAP, and AFDC/TANF. Transition rate rows add up to 100 percent.

Appendix Table 16. Linear Probability Estimates of Biennial SNAP, EITC/CTC, and AFDC/TANF Participation

VARIABLES	All Families	Low-Income Families	Low-Education Families	Single Mother Families
Family Level				
Ages 28-35	-0.0111*** (0.002)	-0.0127*** (0.004)	-0.0134*** (0.003)	-0.0172*** (0.006)
Ages 36-44	-0.0142*** (0.002)	-0.0159*** (0.005)	-0.0154*** (0.003)	-0.0248*** (0.006)
Ages 45-55	-0.0125*** (0.002)	-0.0141*** (0.005)	-0.0138*** (0.003)	-0.0208*** (0.005)
High School Diploma	-0.0118*** (0.001)	-0.0109*** (0.002)	-0.0110*** (0.001)	-0.0173*** (0.004)
Some College	-0.0147*** (0.001)	-0.0132*** (0.003)		-0.0221*** (0.003)
College Graduate	-0.0157*** (0.001)	-0.0261*** (0.003)		-0.0364*** (0.004)
Black	0.0114*** (0.002)	0.0167*** (0.005)	0.0151*** (0.003)	0.0185*** (0.004)
Other Race	0.0028* (0.002)	0.0047 (0.005)	0.0050 (0.003)	-0.0051 (0.008)
Hispanic	-0.0042*** (0.001)	-0.0112** (0.005)	-0.0055** (0.002)	-0.0068* (0.003)
Household Size	-0.0007 (0.001)	0.0023 (0.002)	0.0008 (0.001)	0.0012 (0.003)
Number of Own Kids < Age 18	0.0054*** (0.001)	0.0032 (0.002)	0.0064*** (0.001)	0.0142*** (0.004)
Female Head	0.0094*** (0.001)	0.0244*** (0.002)	0.0151*** (0.001)	
Married Head	-0.0187*** (0.002)	-0.0193*** (0.004)	-0.0202*** (0.003)	
Lives in Metro Area	-0.0018 (0.001)	-0.0013 (0.004)	-0.0018 (0.002)	-0.0075 (0.005)
Central City	0.0036*** (0.001)	0.0035 (0.004)	0.0028 (0.002)	0.0053 (0.004)
State/Federal Level				
State Unemployment Rate (UR)	0.0037 (0.071)	0.0099 (0.254)	-0.0500 (0.114)	-0.0581 (0.283)
1 Year Lagged State UR	-0.0473 (0.089)	-0.2256 (0.314)	-0.0171 (0.127)	-0.1460 (0.434)
2 year Lagged State UR	0.0941 (0.067)	0.2998 (0.240)	0.1568 (0.106)	0.1220 (0.358)
State % Full Year Worker	0.0072 (0.012)	0.0612 (0.045)	0.0124 (0.020)	0.0783 (0.051)
State % Part Year Worker	0.0375* (0.020)	0.1252* (0.075)	0.0705** (0.031)	0.1024 (0.096)
State % Not in Labor Force	0.0251 (0.023)	0.1101 (0.083)	0.0500 (0.043)	0.0842 (0.097)
State Median Wage	-0.0009* (0.000)	-0.0029* (0.002)	-0.0016* (0.001)	-0.0039* (0.002)
State Minimum Wage	-0.0005	-0.0029	-0.0020*	0.0019

	(0.001)	(0.003)	(0.001)	(0.004)
EITC Subsidy Rate	-0.0863***	-0.0569	-0.0990***	-0.1706**
	(0.020)	(0.060)	(0.034)	(0.078)
State Has Refundable EITC	-0.0006	-0.0039	-0.0022	-0.0012
	(0.001)	(0.005)	(0.002)	(0.005)
Any Welfare Reform Waiver	0.0002	-0.0031	0.0040	-0.0028
	(0.003)	(0.011)	(0.005)	(0.012)
TANF Implementation	-0.0097***	-0.0251	-0.0021	-0.0462***
	(0.003)	(0.018)	(0.007)	(0.015)
Max SNAP Benefit (\$100s)	0.0034***	0.0028	0.0019	-0.0006
	(0.001)	(0.002)	(0.002)	(0.004)
Implementation of EBT Card	0.0011	0.0026	0.0035	0.0093
	(0.002)	(0.008)	(0.003)	(0.009)
Broad-Based Eligibility	-0.0023**	-0.0098**	-0.0060***	-0.0014
	(0.001)	(0.004)	(0.002)	(0.005)
Short Certification	-0.0017	-0.0093**	-0.0029	-0.0081*
	(0.001)	(0.004)	(0.002)	(0.004)
Requires Fingerprinting	0.0063***	0.0253***	0.0122***	0.0207***
	(0.001)	(0.004)	(0.003)	(0.005)
Compulsory Disqualification	0.0018	0.0049	0.0046*	0.0028
	(0.001)	(0.005)	(0.002)	(0.005)
Simplified Reporting	0.0010	0.0042	0.0039*	0.0070
	(0.002)	(0.005)	(0.002)	(0.007)
Vehicle Assets Excludable	-0.0006	-0.0031	0.0007	-0.0043
	(0.001)	(0.003)	(0.001)	(0.004)
Outreach (\$100 millions)	0.0001	-0.0001	0.0004	0.0017**
	(0.000)	(0.001)	(0.000)	(0.001)
Noncitizens SNAP-eligible	0.0009	0.0012	0.0019	-0.0000
	(0.002)	(0.008)	(0.002)	(0.008)
Governor is Democrat	0.0008	0.0031	0.0031**	0.0018
	(0.001)	(0.003)	(0.001)	(0.003)
Observations	176,072	39,596	80,574	27,522
R-squared	0.031	0.034	0.034	0.037

Standard errors in parenthesis control for heteroskedasticity and within-state autocorrelation. All models control for fixed state and time effects. *** p<0.01, ** p<0.05, * p<0.1.

Appendix Table 17. Linear Probability Estimates of Biennial SNAP, EITC/CTC, AFDC/TANF, and SSI Participation

VARIABLES	All Families	Low-Income Families	Low-Education Families	Single Mother Families
Family Level				
Ages 28-35	0.0001 (0.000)	0.0001 (0.000)	0.0000 (0.000)	0.0006 (0.001)
Ages 36-44	0.0002 (0.000)	0.0011 (0.001)	0.0000 (0.000)	0.0018*** (0.001)
Ages 45-55	0.0005 (0.000)	0.0029* (0.002)	0.0009 (0.001)	0.0030* (0.002)
High School Diploma	-0.0002 (0.000)	0.0004 (0.001)	-0.0001 (0.000)	-0.0001 (0.001)
Some College	-0.0005 (0.000)	-0.0001 (0.001)		-0.0006 (0.001)
College Graduate	-0.0007* (0.000)	-0.0011 (0.001)		-0.0018 (0.001)
Black	0.0004 (0.000)	0.0000 (0.001)	0.0005 (0.001)	0.0006 (0.001)
Other Race	0.0001 (0.000)	-0.0003 (0.001)	0.0003 (0.001)	0.0002 (0.001)
Hispanic	-0.0005*** (0.000)	-0.0017*** (0.001)	-0.0004 (0.000)	-0.0006 (0.001)
Household Size	0.0004 (0.000)	0.0011 (0.001)	0.0007 (0.000)	0.0015 (0.001)
Number of Own Kids < Age 18	0.0002 (0.000)	-0.0001 (0.001)	0.0002 (0.000)	0.0013 (0.001)
Female Head	0.0007*** (0.000)	0.0025** (0.001)	0.0010** (0.000)	
Married Head	-0.0005** (0.000)	0.0002 (0.001)	-0.0005 (0.000)	
Lives in Metro Area	0.0000 (0.000)	0.0006 (0.001)	0.0001 (0.000)	0.0008 (0.001)
Central City	0.0005** (0.000)	0.0010 (0.001)	0.0007* (0.000)	0.0018** (0.001)
State/Federal Level				
State Unemployment Rate (UR)	-0.0205* (0.012)	-0.0715 (0.043)	-0.0484** (0.023)	-0.1051 (0.068)
1 Year Lagged State UR	0.0152 (0.011)	0.0513 (0.043)	0.0394* (0.021)	0.0936 (0.079)
2 year Lagged State UR	0.0061 (0.008)	0.0257 (0.029)	-0.0014 (0.011)	-0.0009 (0.055)
State % Full Year Worker	0.0005 (0.003)	0.0032 (0.012)	0.0014 (0.006)	0.0118 (0.013)
State % Part Year Worker	0.0005 (0.003)	0.0018 (0.012)	-0.0004 (0.007)	0.0094 (0.017)
State % Not in Labor Force	0.0062 (0.004)	0.0231 (0.017)	0.0104 (0.009)	0.0171 (0.023)
State Median Wage	0.0001 (0.000)	0.0005 (0.000)	0.0002 (0.000)	0.0001 (0.000)
State Minimum Wage	0.0001	0.0002	0.0001	0.0008

	(0.000)	(0.001)	(0.000)	(0.001)
EITC Subsidy Rate	-0.0056	-0.0069	-0.0027	-0.0033
	(0.004)	(0.012)	(0.005)	(0.015)
State Has Refundable EITC	0.0001	0.0003	0.0001	0.0007
	(0.000)	(0.001)	(0.001)	(0.001)
Any Welfare Reform Waiver	-0.0007	-0.0028	-0.0018	-0.0017
	(0.001)	(0.002)	(0.001)	(0.002)
TANF Implementation	0.0007	0.0034	-0.0013	0.0074
	(0.001)	(0.005)	(0.002)	(0.006)
Max SNAP Benefit (\$100s)	-0.0001	0.0000	-0.0003	-0.0017
	(0.000)	(0.000)	(0.000)	(0.001)
Implementation of EBT Card	0.0004	0.0015	0.0005	0.0011
	(0.000)	(0.002)	(0.001)	(0.002)
Broad-Based Eligibility	0.0003	0.0012	0.0005	0.0014
	(0.000)	(0.001)	(0.001)	(0.001)
Short Certification	0.0003**	0.0010**	0.0007***	0.0005
	(0.000)	(0.000)	(0.000)	(0.001)
Requires Fingerprinting	-0.0003	-0.0008	-0.0000	-0.0022***
	(0.000)	(0.001)	(0.000)	(0.001)
Compulsory Disqualification	-0.0000	-0.0002	-0.0000	-0.0003
	(0.000)	(0.001)	(0.000)	(0.001)
Simplified Reporting	-0.0002	-0.0005	-0.0003	0.0003
	(0.000)	(0.001)	(0.001)	(0.001)
Vehicle Assets Excludable	-0.0001	-0.0002	-0.0002	-0.0005
	(0.000)	(0.001)	(0.000)	(0.001)
Outreach (\$100 millions)	0.0000	0.0000	-0.0000	0.0001
	(0.000)	(0.000)	(0.000)	(0.000)
Noncitizens SNAP-eligible	0.0004*	0.0015	0.0009*	0.0008
	(0.000)	(0.001)	(0.001)	(0.001)
Governor is Democrat	-0.0001	-0.0002	0.0001	0.0003
	(0.000)	(0.001)	(0.000)	(0.001)
Observations	176,072	39,596	80,574	27,522
R-squared	0.003	0.006	0.004	0.011

Standard errors in parenthesis control for heteroskedasticity and within-state autocorrelation. All models control for fixed state and time effects. *** p<0.01, ** p<0.05, * p<0.1.